

ZENEX IMPLANT SYSTEM DIGITAL LIBRARY MANUAL

for **exocad**



Table of Contents

Requirements

Basic

Download the Latest ZENEX IMPLANT Digital Library

Extract the downloaded compressed file

Open the Cad file location

For ZENEX Library : Path / Copy and Paste

For Model Creator : Path / Copy and Paste

Design

Model Creator

Customized Abutment

Link type Abutment

Stock Abutment

Requirements

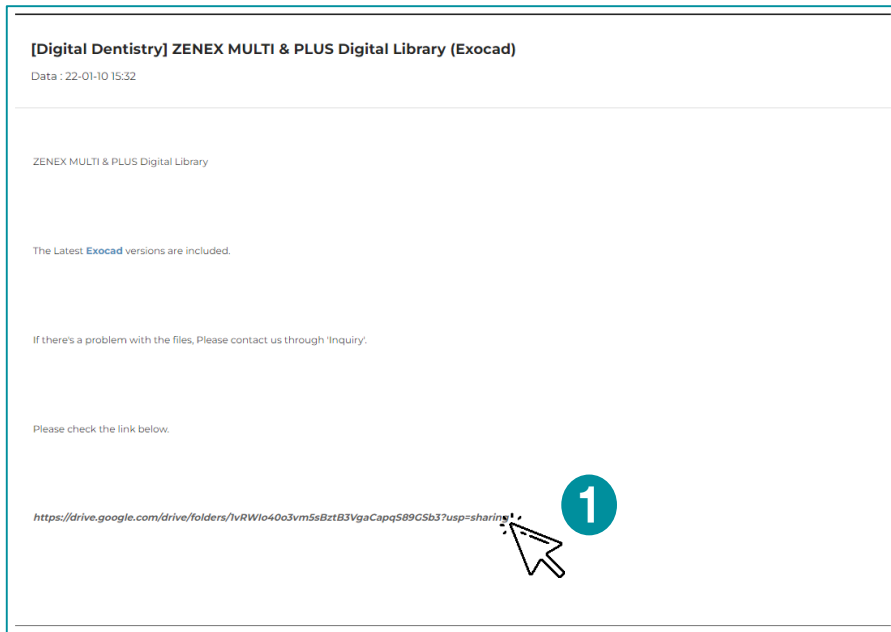
- You can use ZENEX Digital abutments with IZEN IMPLANT Digital Libraries.
(ZENEX ScanBody, ZENEX Ti–Link Abutment, ZENEX Ti–Blank Abutment)
- You can download the IZEN IMPLANT Digital Libraries on our website at:
[Here](#)

Potential preconditions for usage of our libraries:

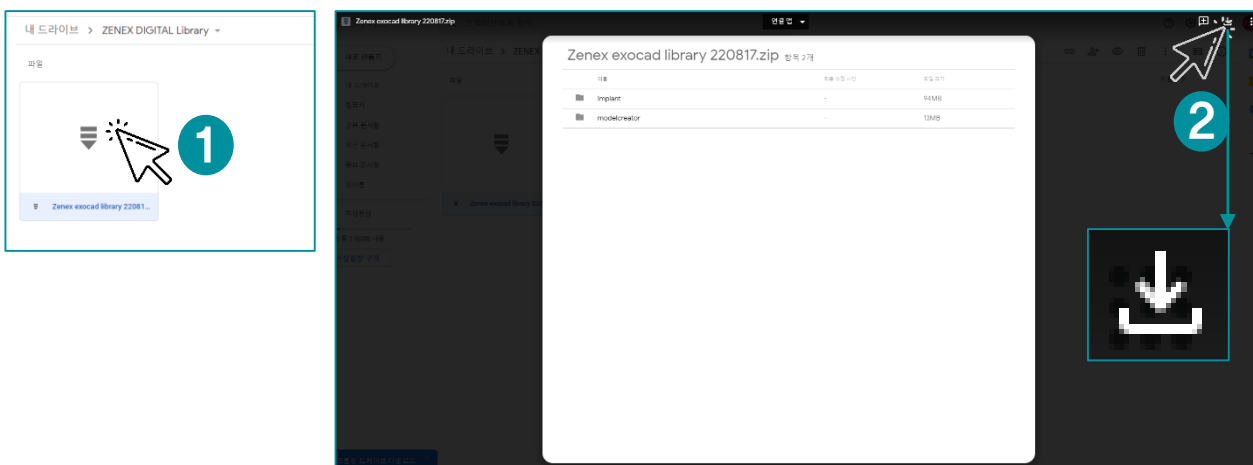
- Dental System 2016 or newer
- Abutment Designer Module
- Implant Bars/Bridge Design Module
- Model Builder STL

Download the Latest ZENEX Digital Library

1. To download the latest ZENEX Digital Library, go to the IZEN IMPLANT Website at the following link: [Here](#)

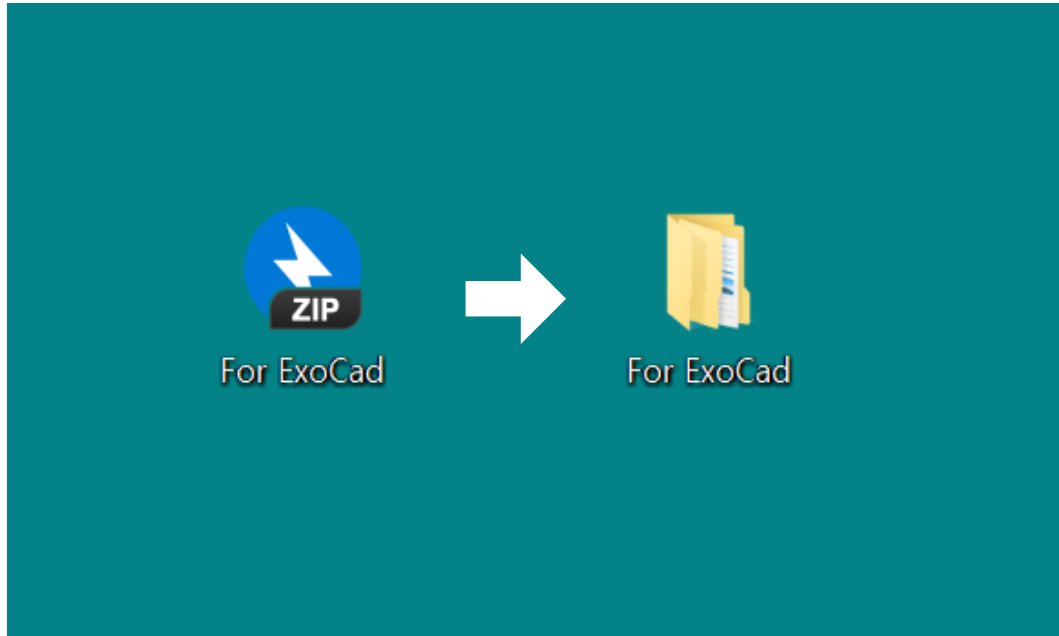


2. Follow the Download Link and Download the Library as the compressed file to your desktop (or other preferred location)

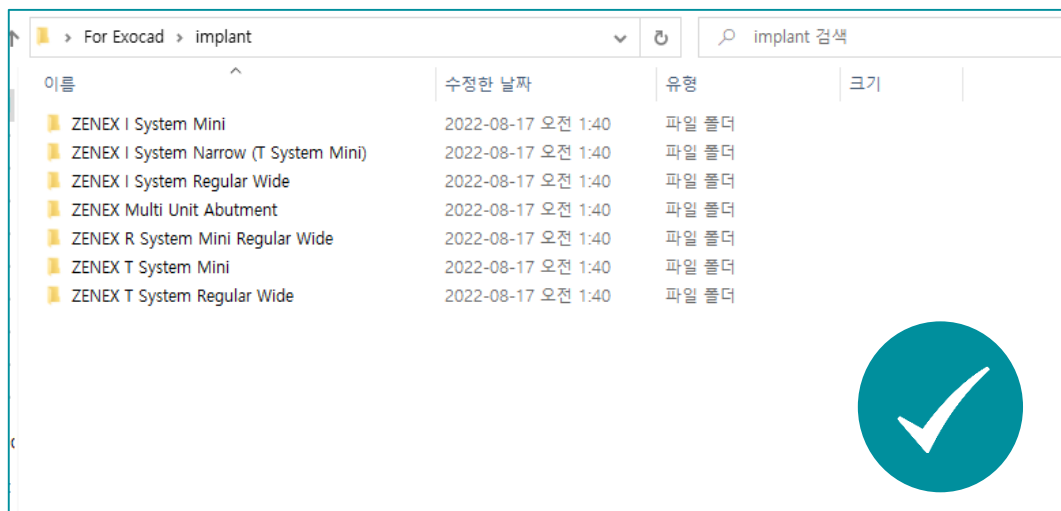


Extracted the downloaded compressed file

1. Extract the downloaded compressed file

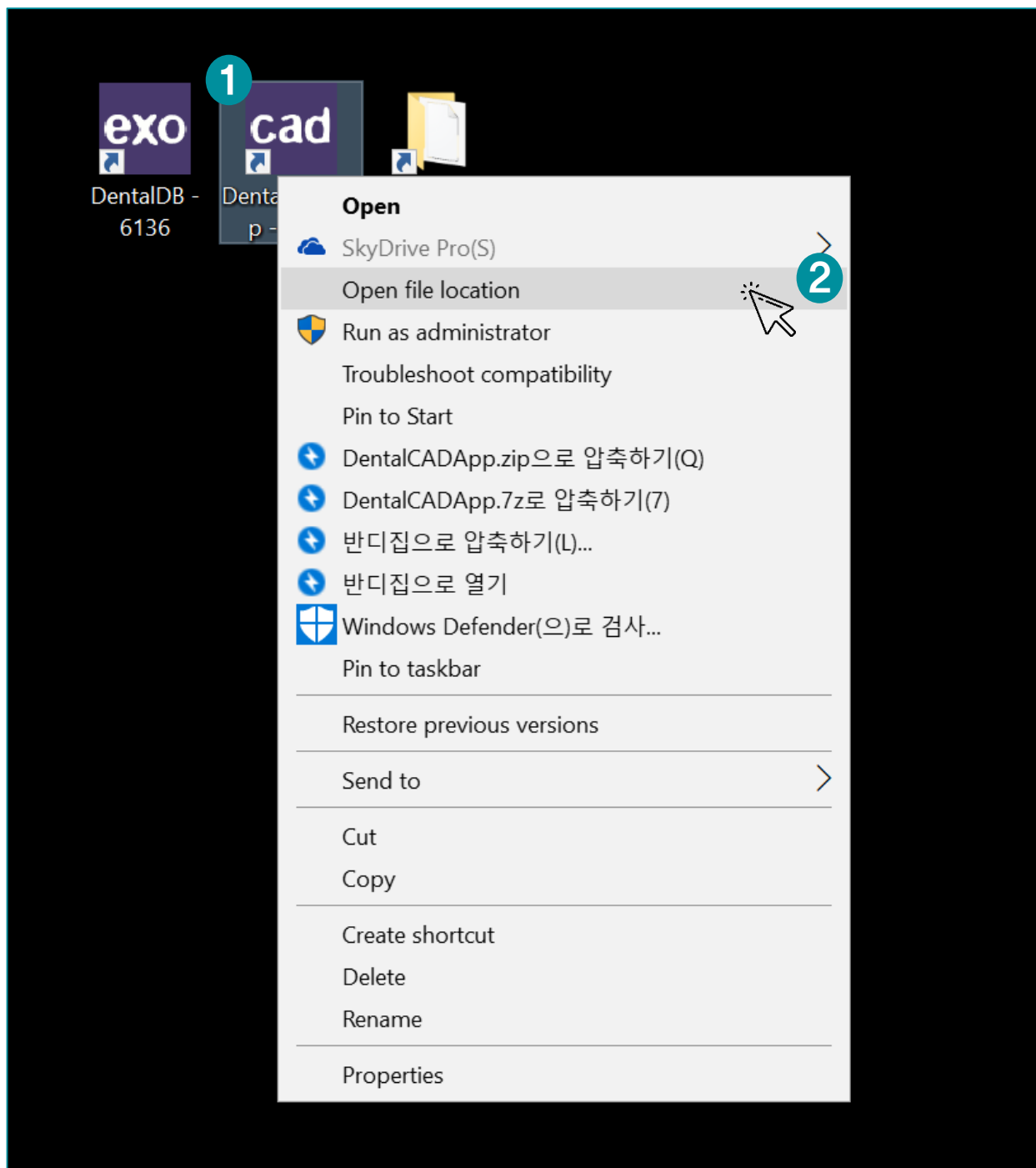


2. The library and Model creator files are included in the unpacked folder



Open the CAD file location

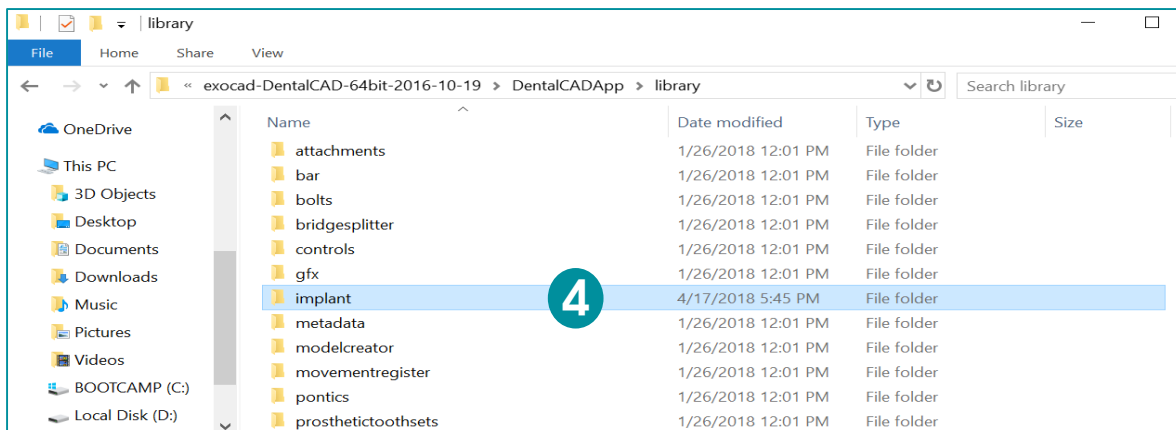
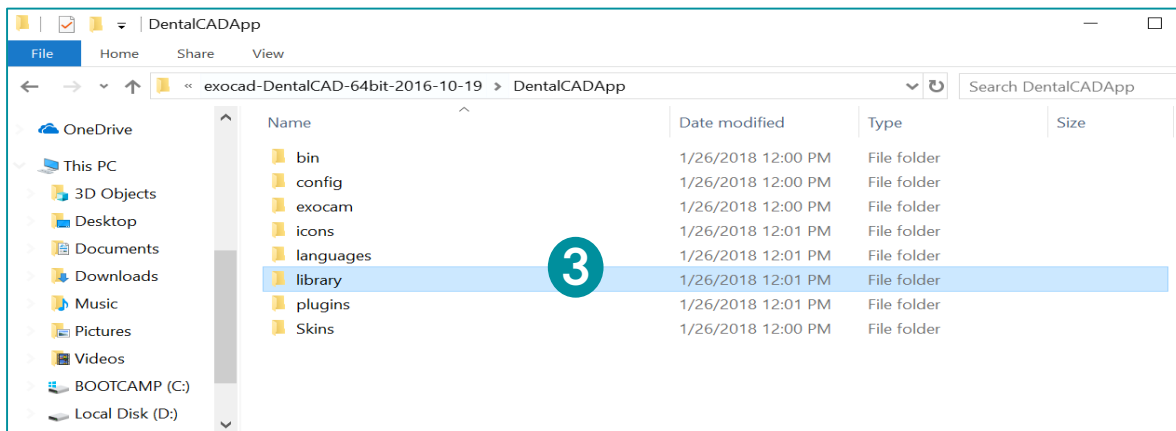
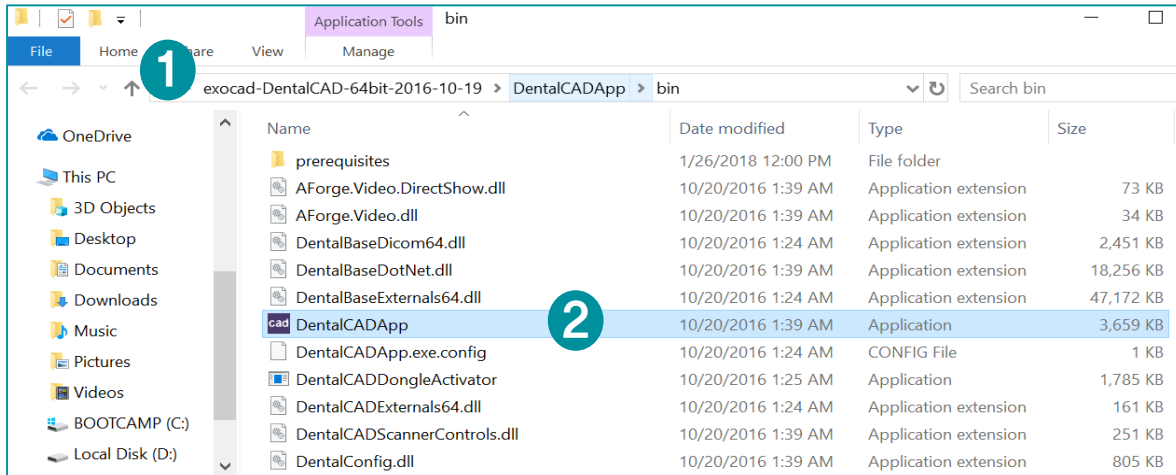
1. Right click on the Exocad icon on your personal computer and Click to **“Open file location”**



For ZENEX Library : Path

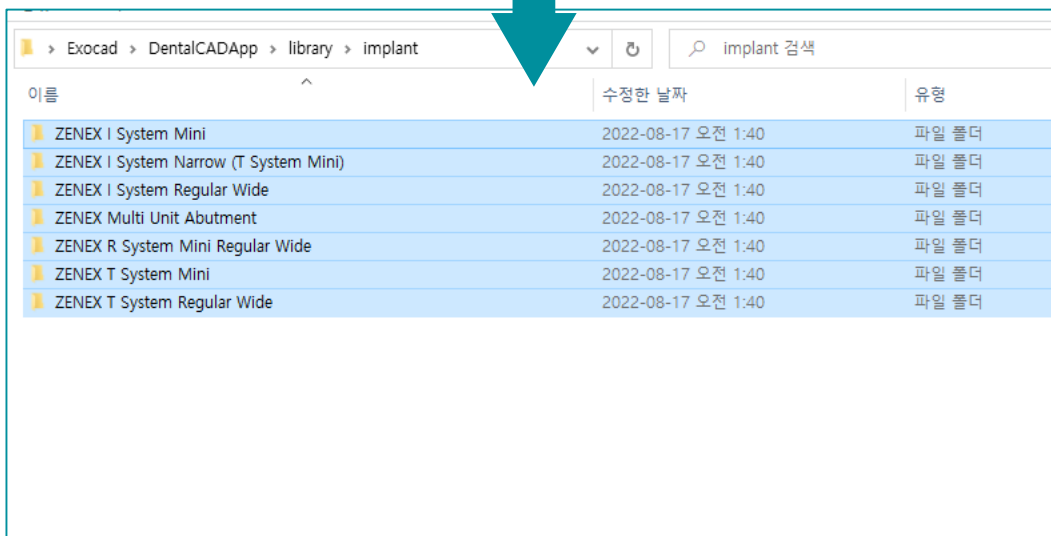
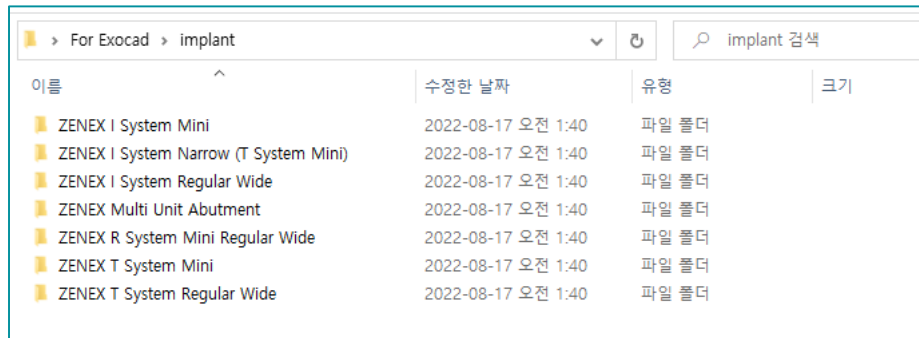
- Following the Path below

Exocad – DentalCADApp – library – implant



For ZENEX Library : Copy and Paste

- Move Library files **from the downloaded library folder to the Exocad implant library folder** (Use Ctrl+c, Ctrl+v or Drag and drop)

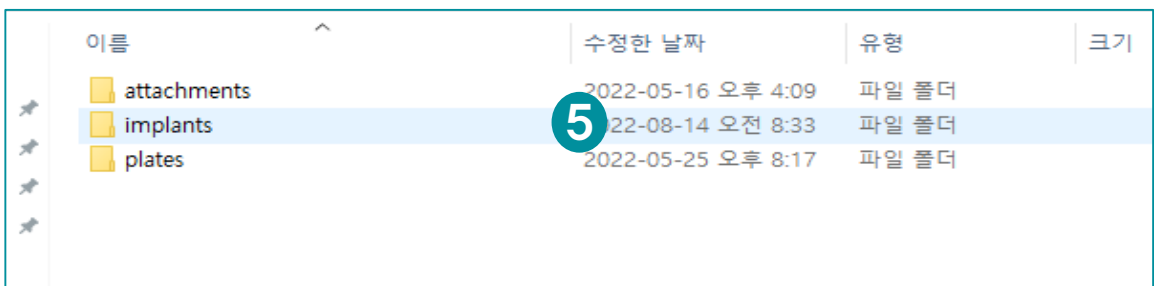
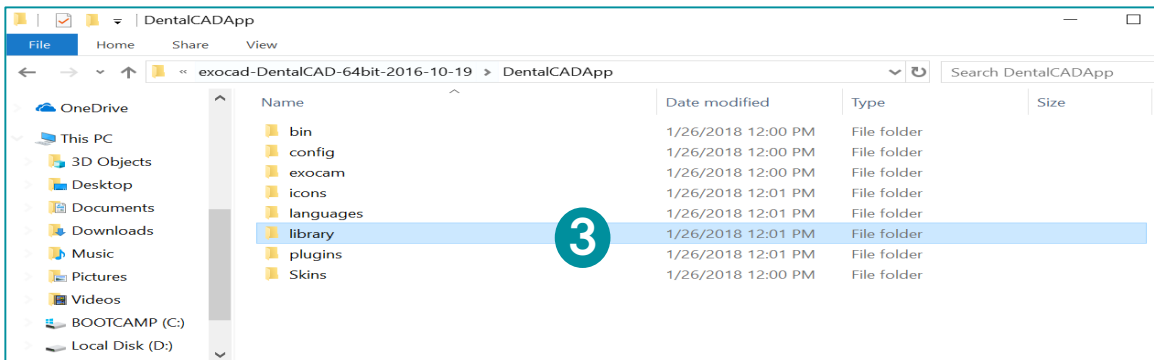
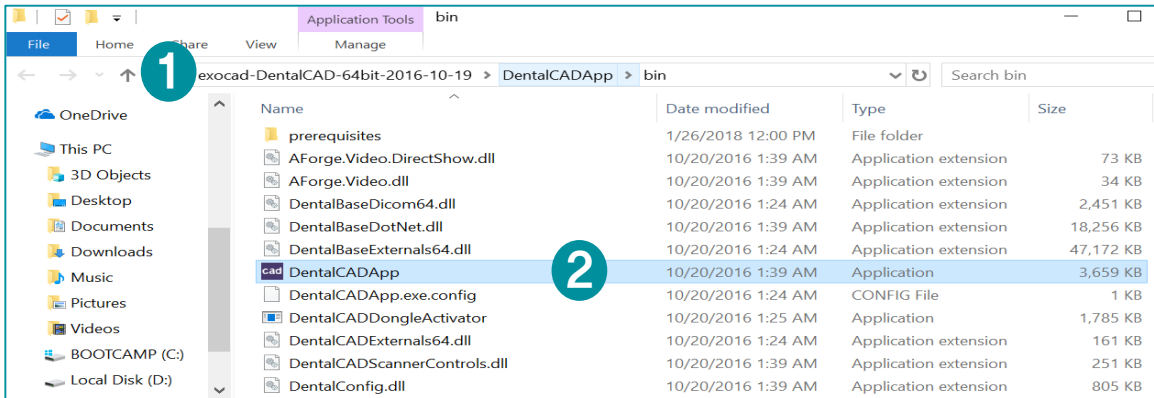


- The Digital Library installation is completed.
- To apply the library, **Restart the running exocad.**

For Model Creator : Path

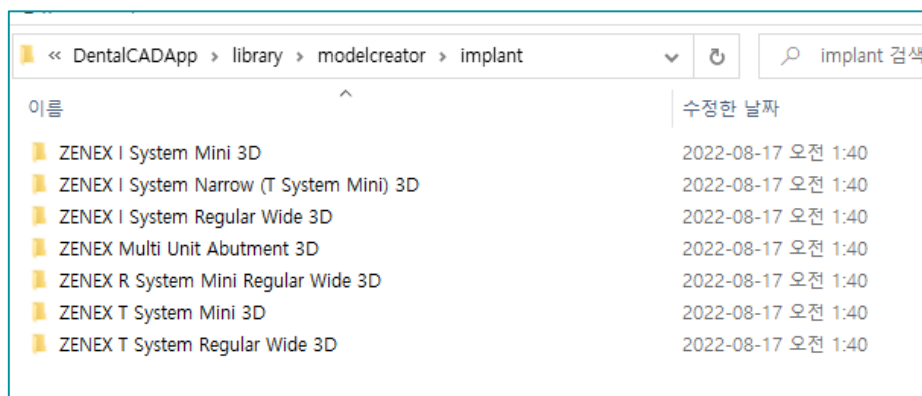
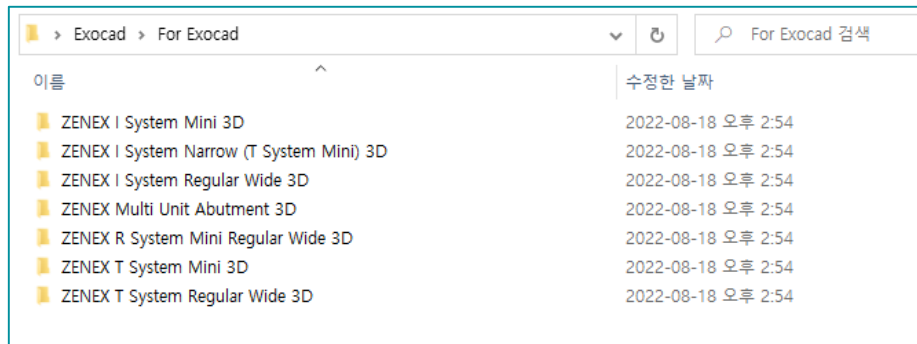
- Following the Path below

Exocad – DentalCADApp – library – Modelcreator – implant



For Model Creator : Copy and Paste

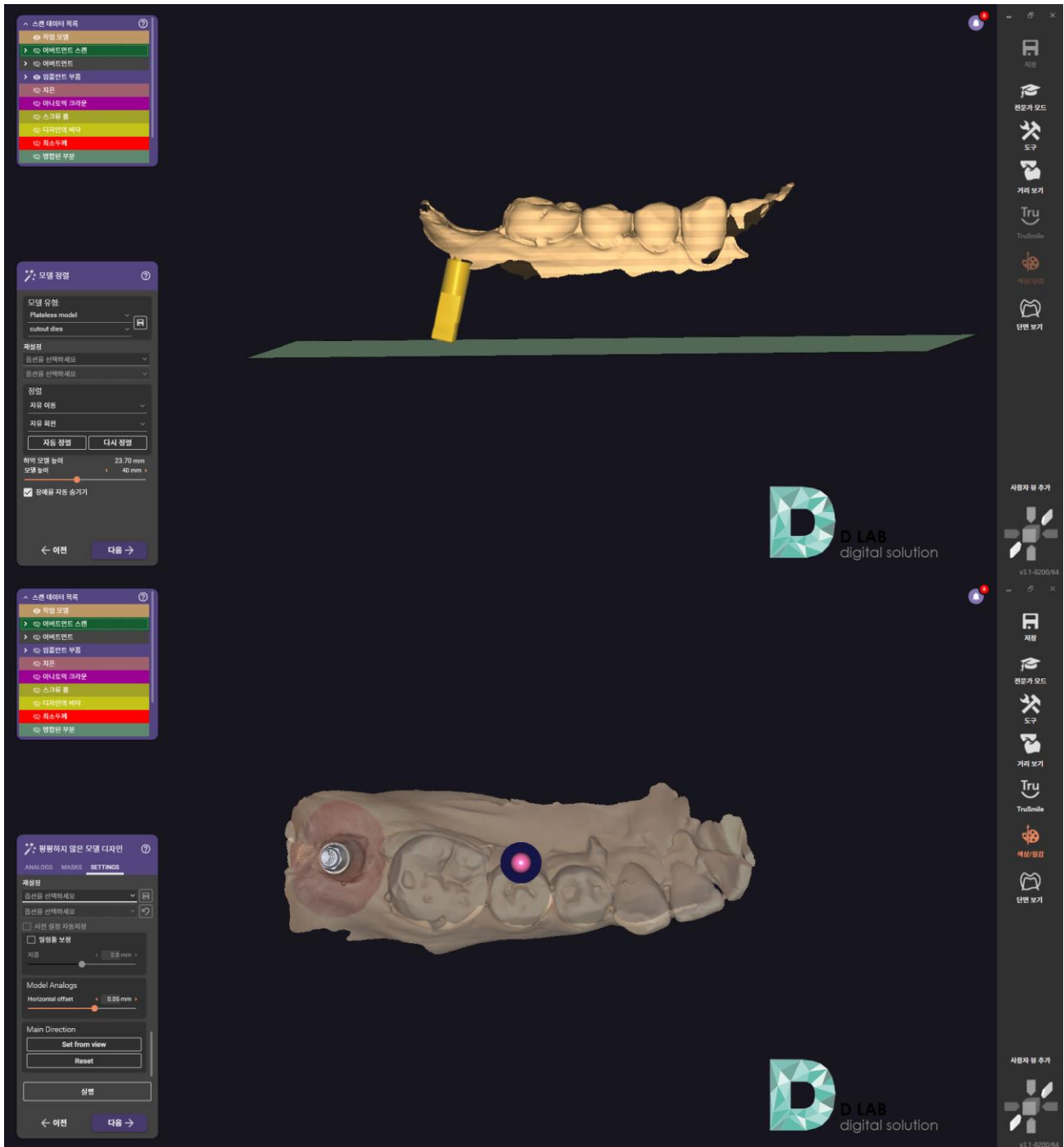
- Move Model Creator files from the downloaded library folder to the Exocad implant Modelcreator folder (Use Ctrl+c, Ctrl+v or Drag and drop)



- The Model creator installation is completed.
- To apply the Model creator, **Restart the running exocad.**

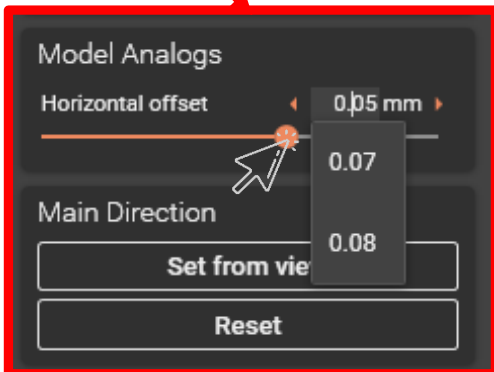
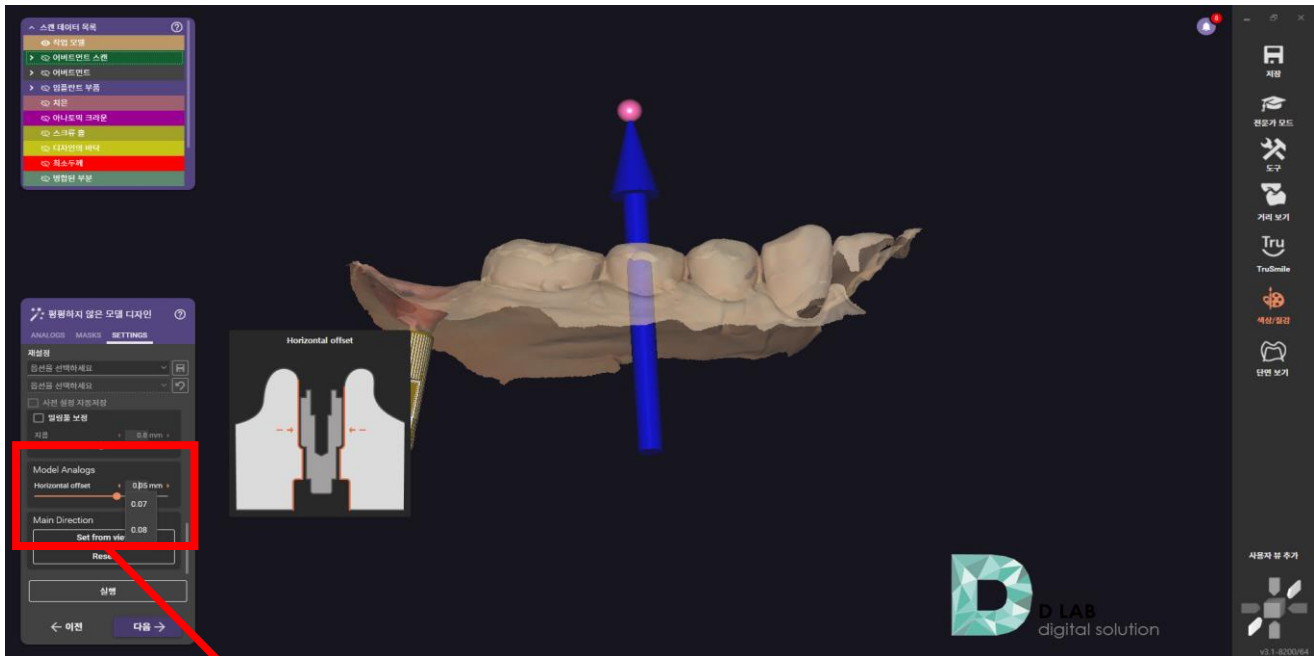
Design : Model Creator

- Prepare Scan data



Design : Model Creator

- Apply appropriate tolerance values for the 3D Printer used
(Adjust the Horizontal offset bigger for stable positioning)



※ Recommendations

- The complete model data is the same, but there may be a difference in printed model depending on each specification of the 3D printer.
- It is recommended to adjust the Horizontal offset value and try with one or two test models, to find appropriate values depending on the specific device. And you can use the value for future models.

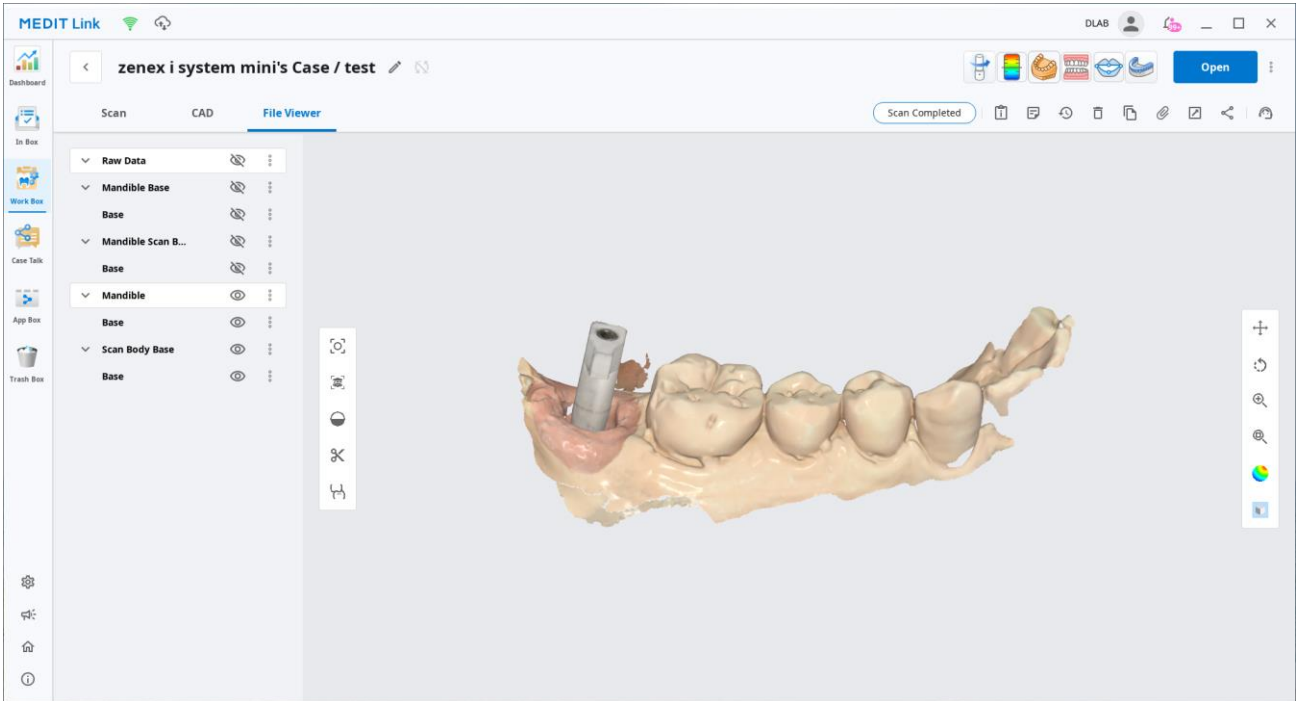
Design : Model Creator

- Complete

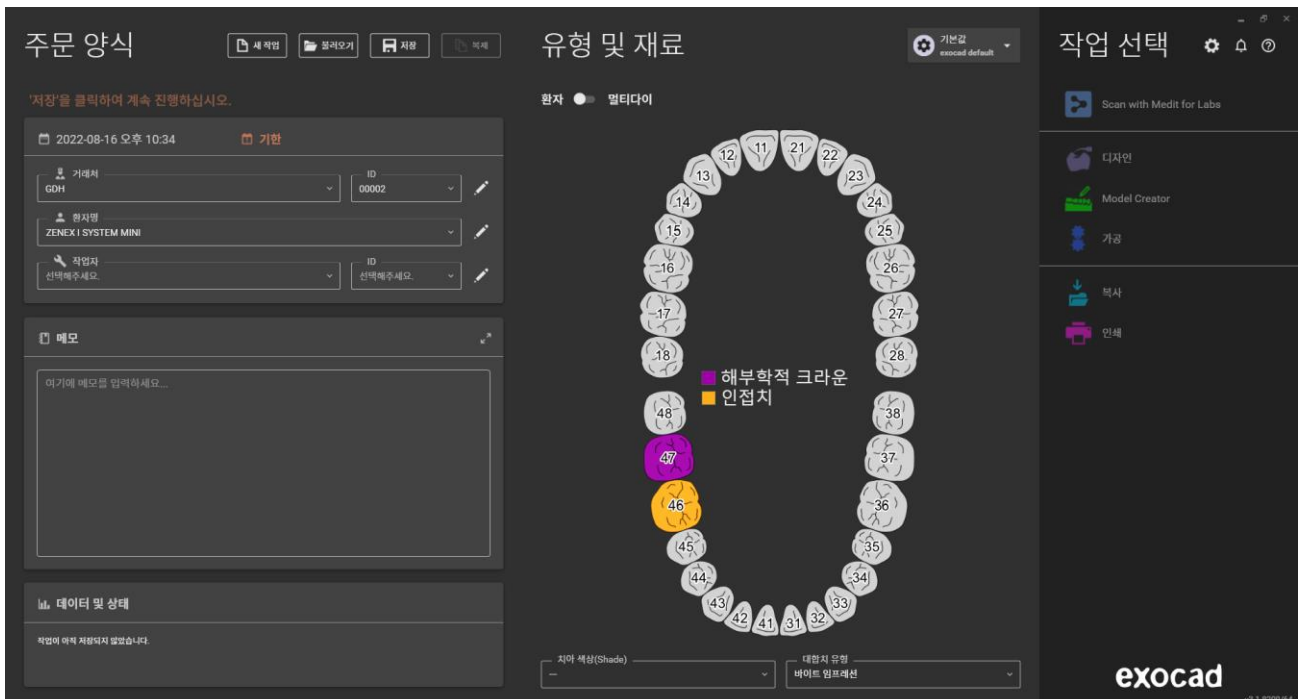


Design : Customized Abutment

- Prepare Scan Data

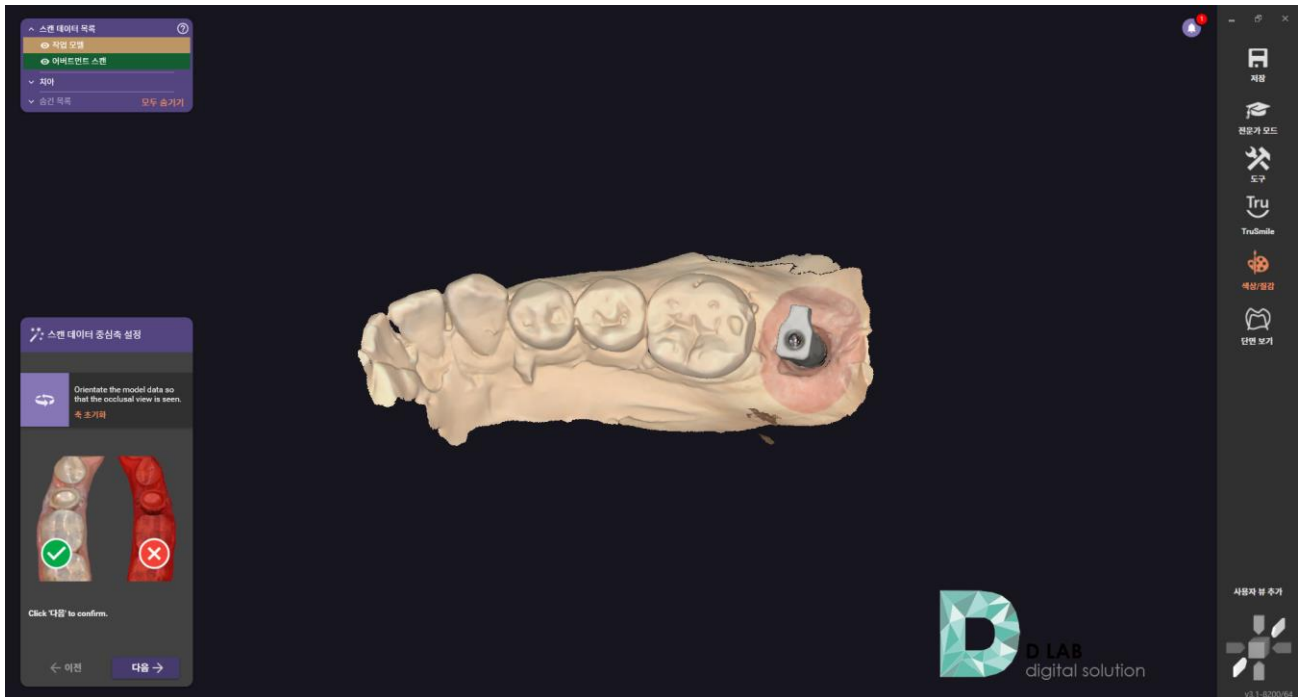


- Fill out Order form

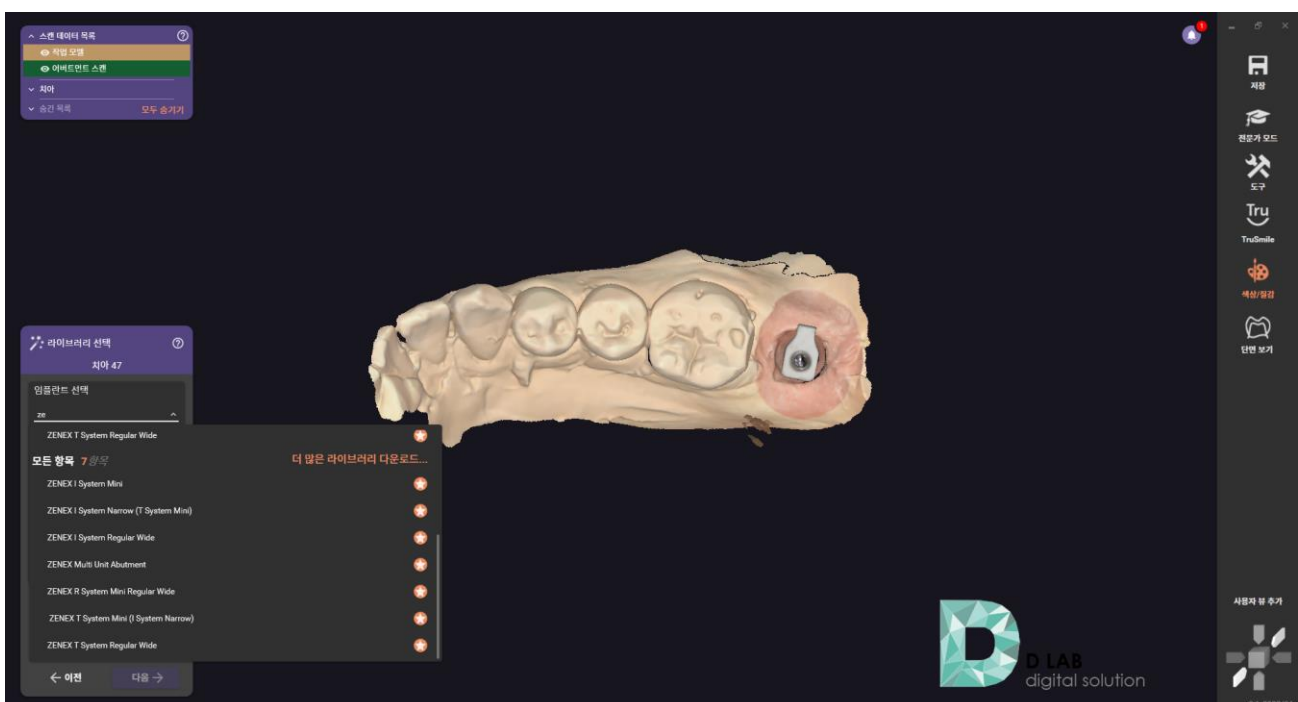


Design : Customized Abutment

- Import Scan Data

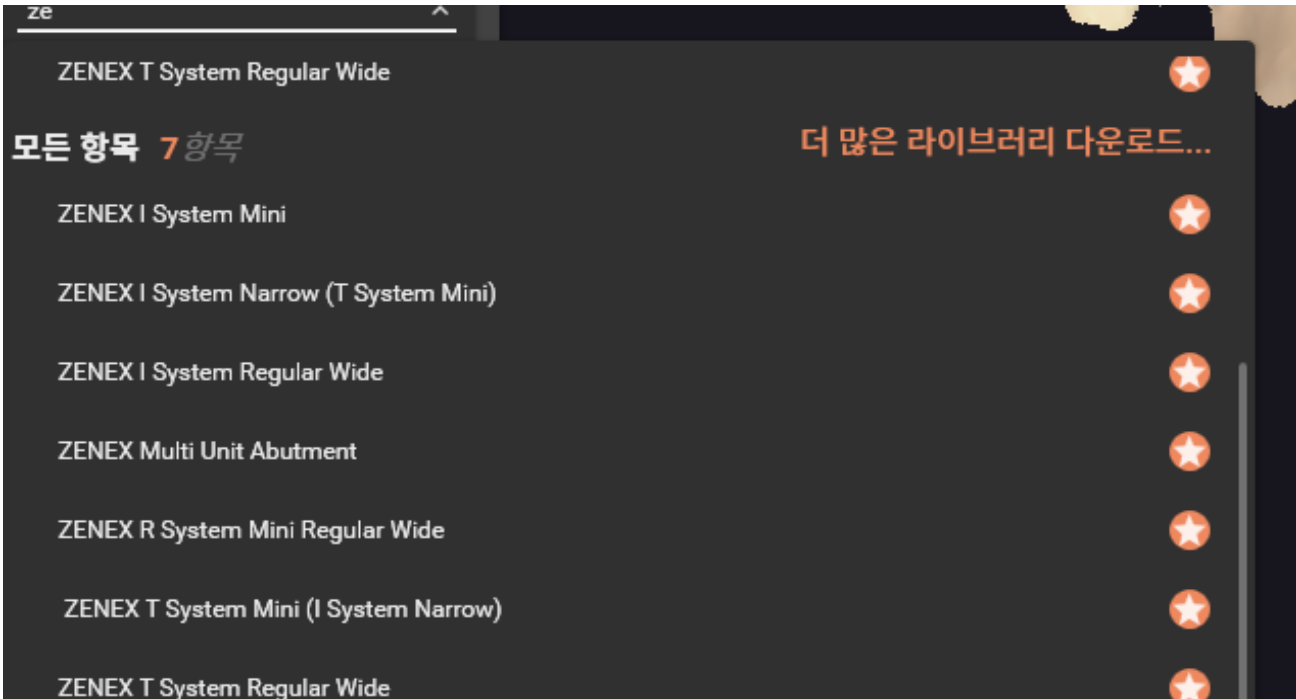


- Select library

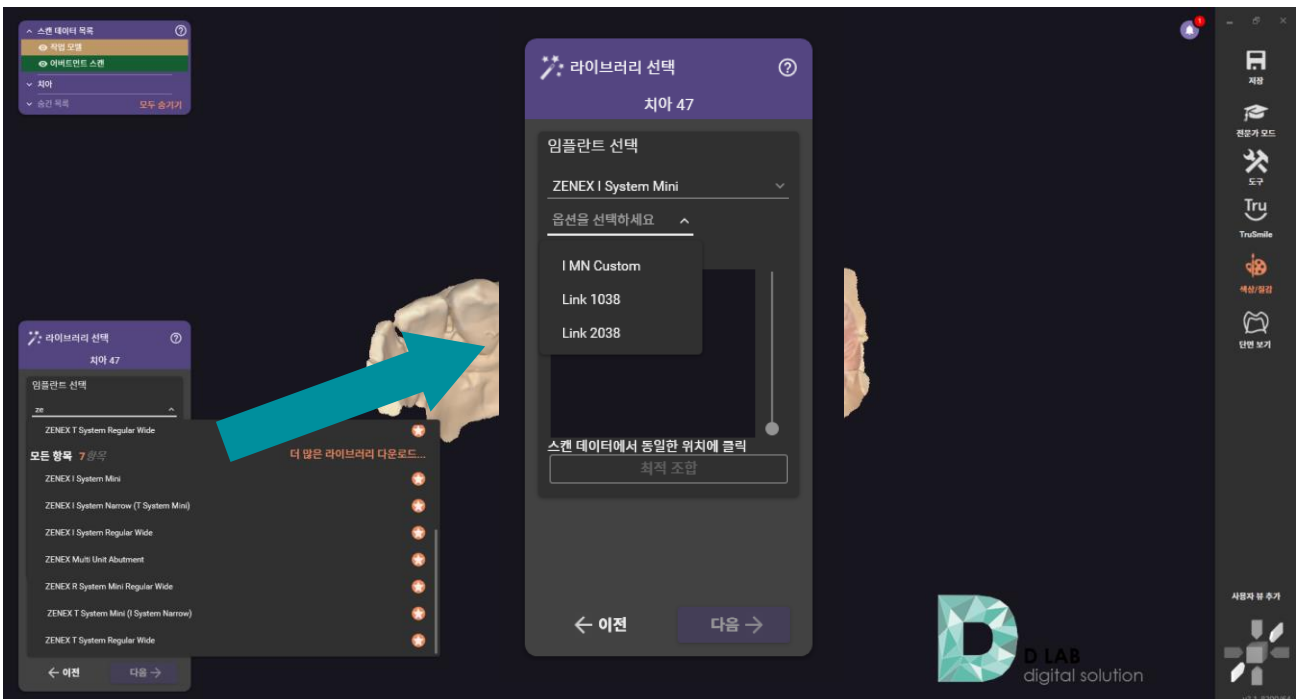


Design : Customized Abutment

- Select matching library

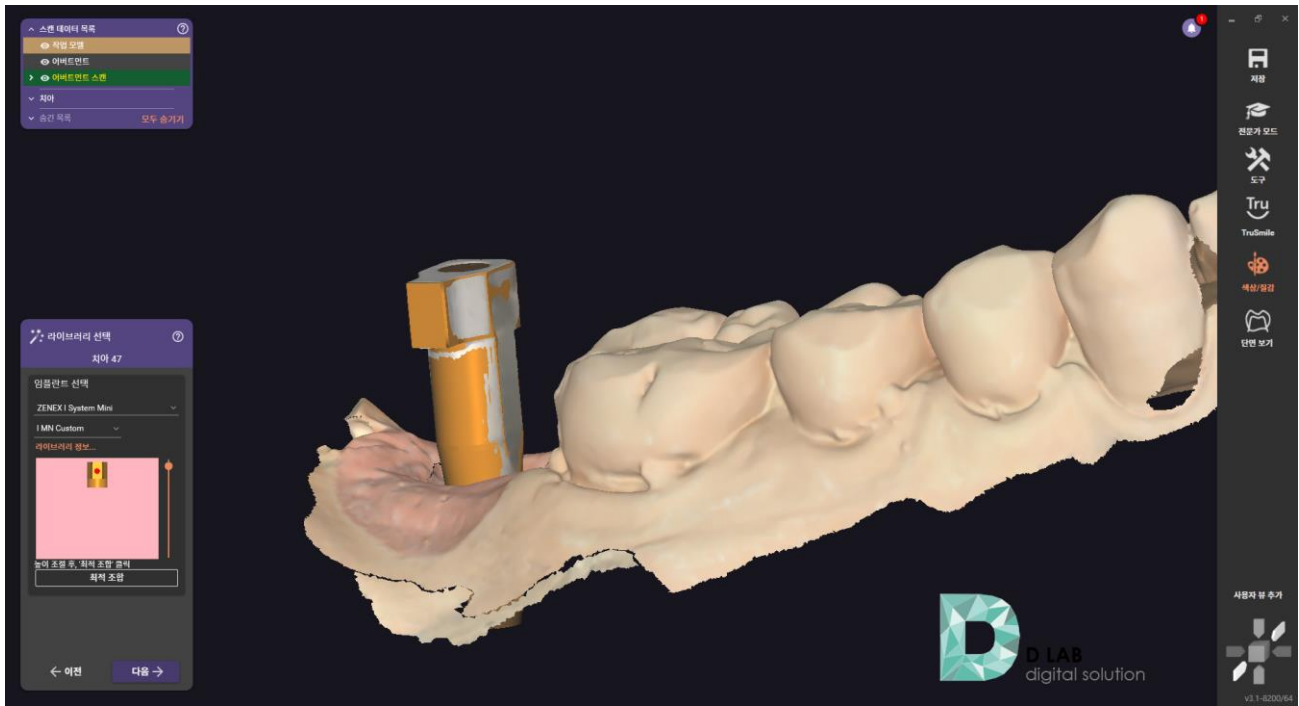


- Select Option

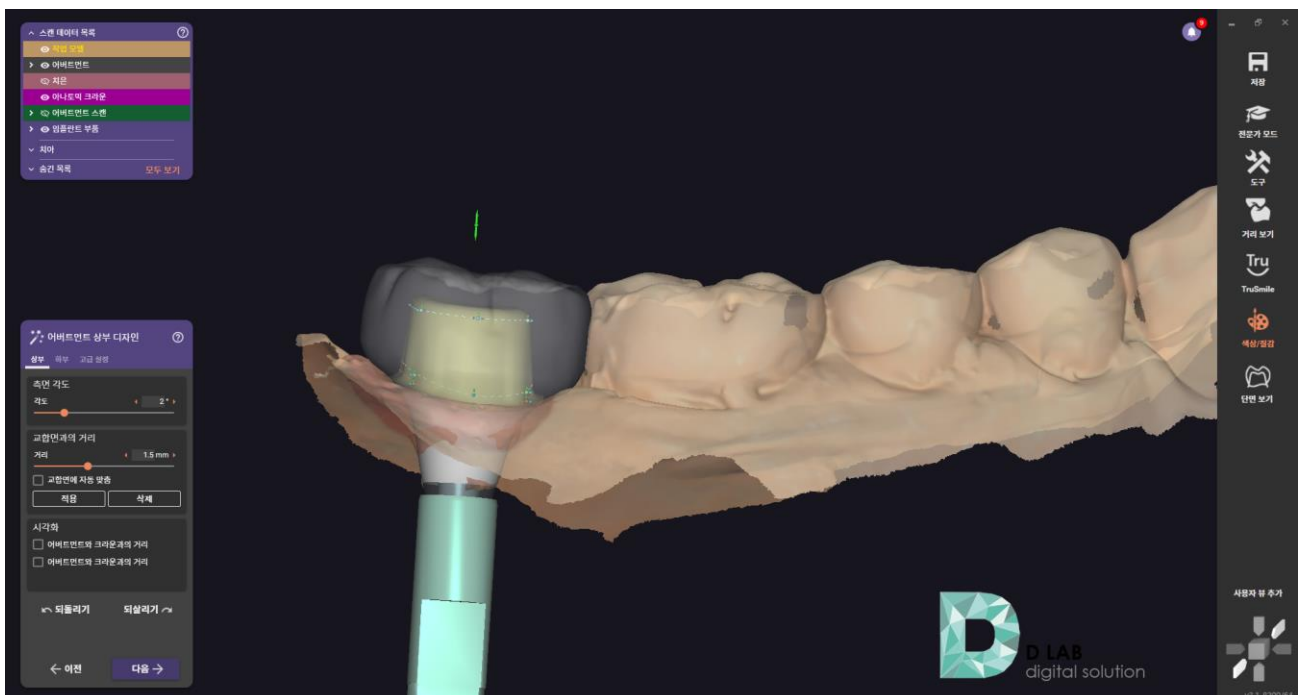


Design : Customized Abutment

- Select Customized Abutment library



- Design Abutment



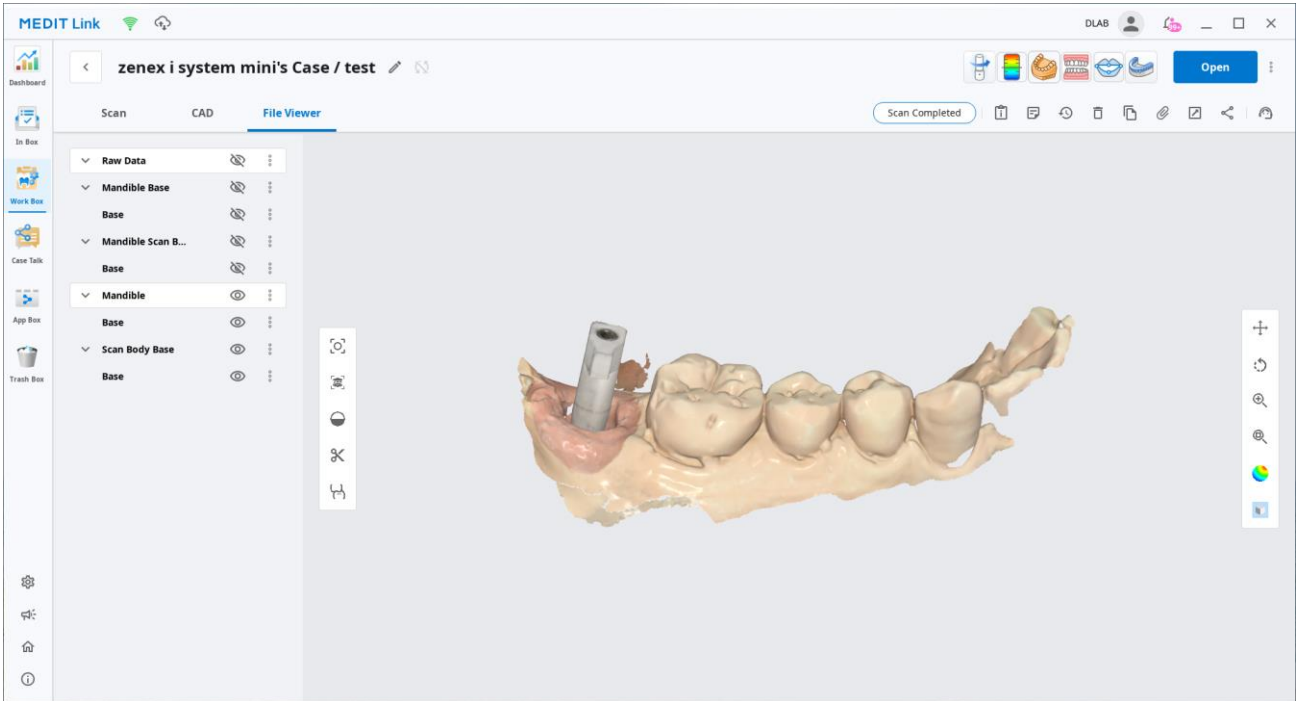
Design : Customized Abutment

- Complete design

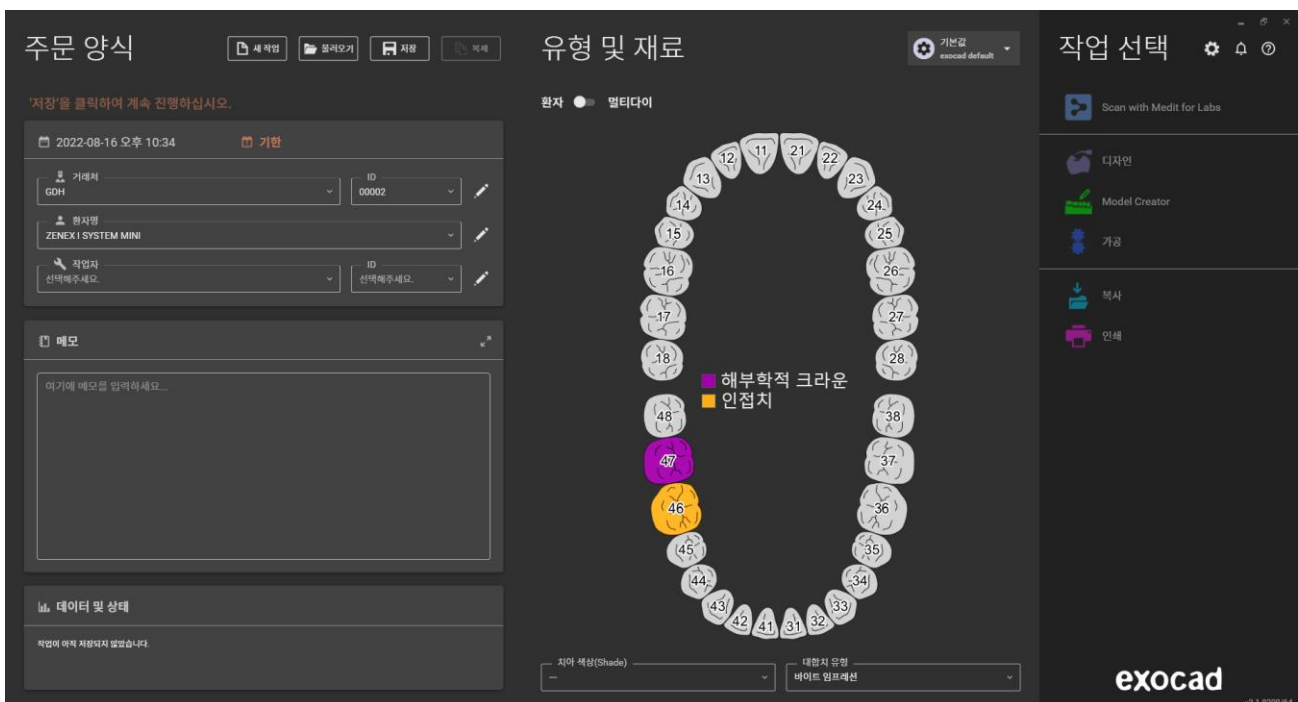


Design : Link type Abutment

- Prepare Scan Data

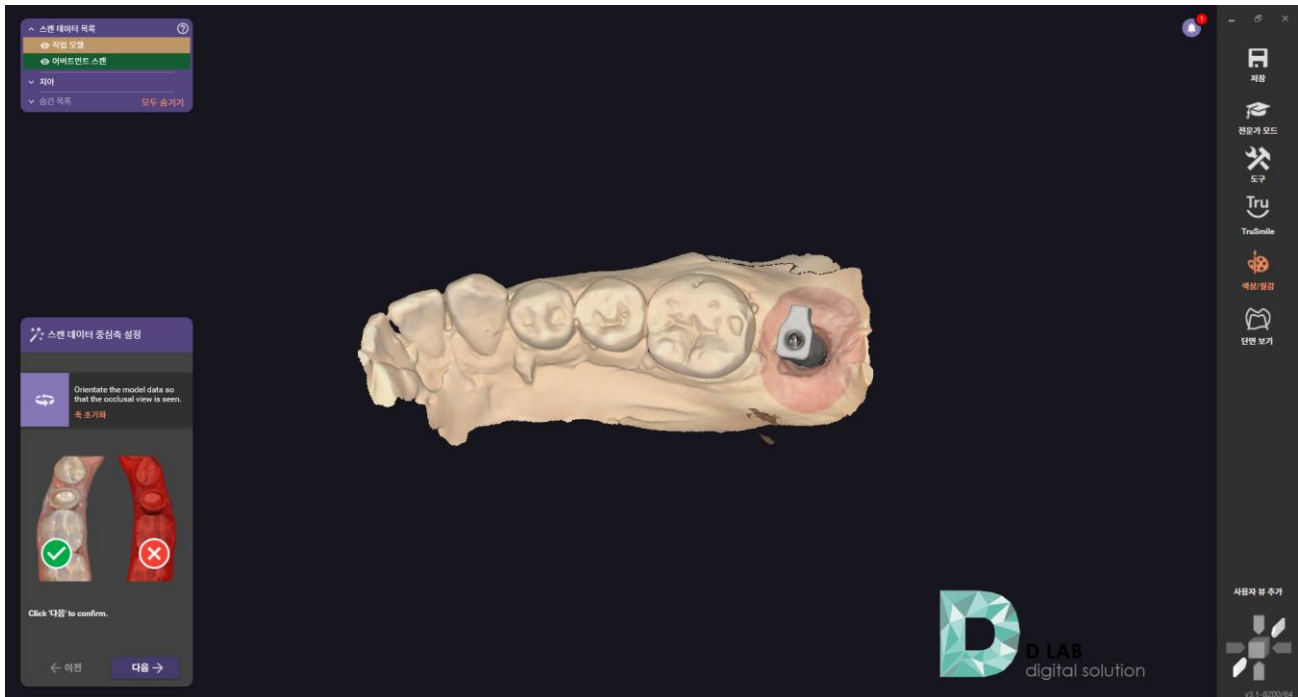


- Fill out Order form

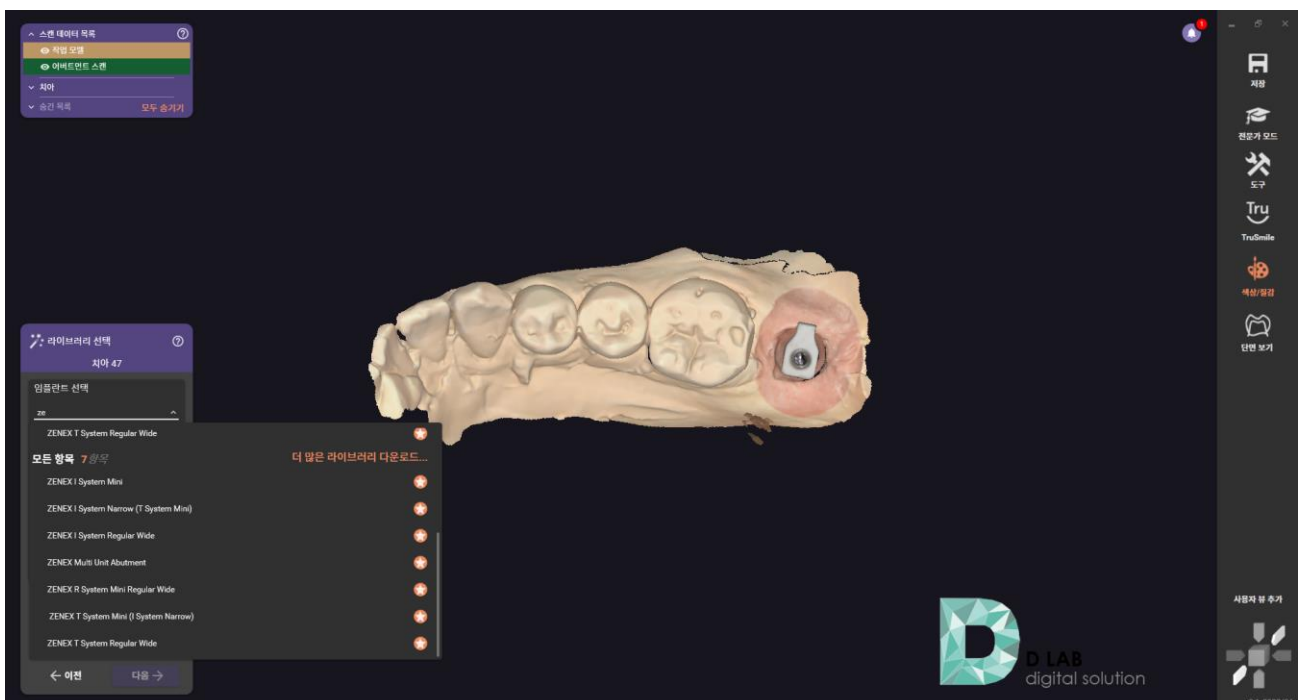


Design : Link type Abutment

- Import Scan Data

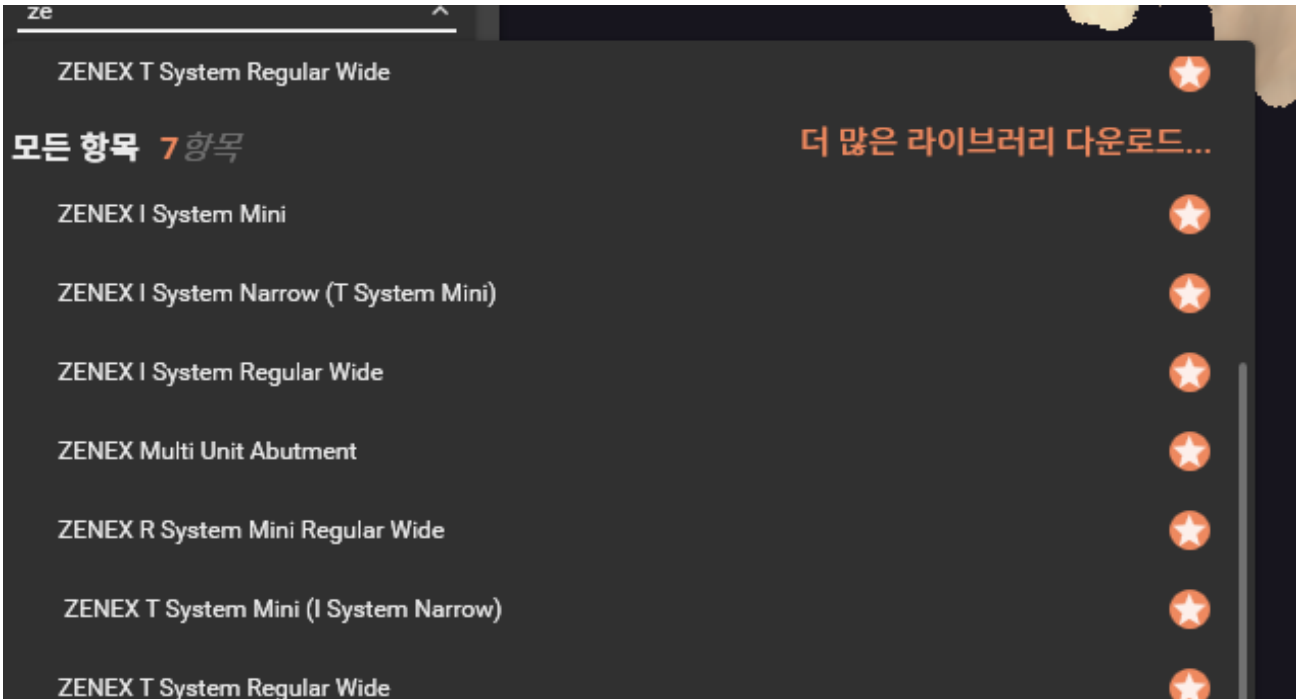


- Select library

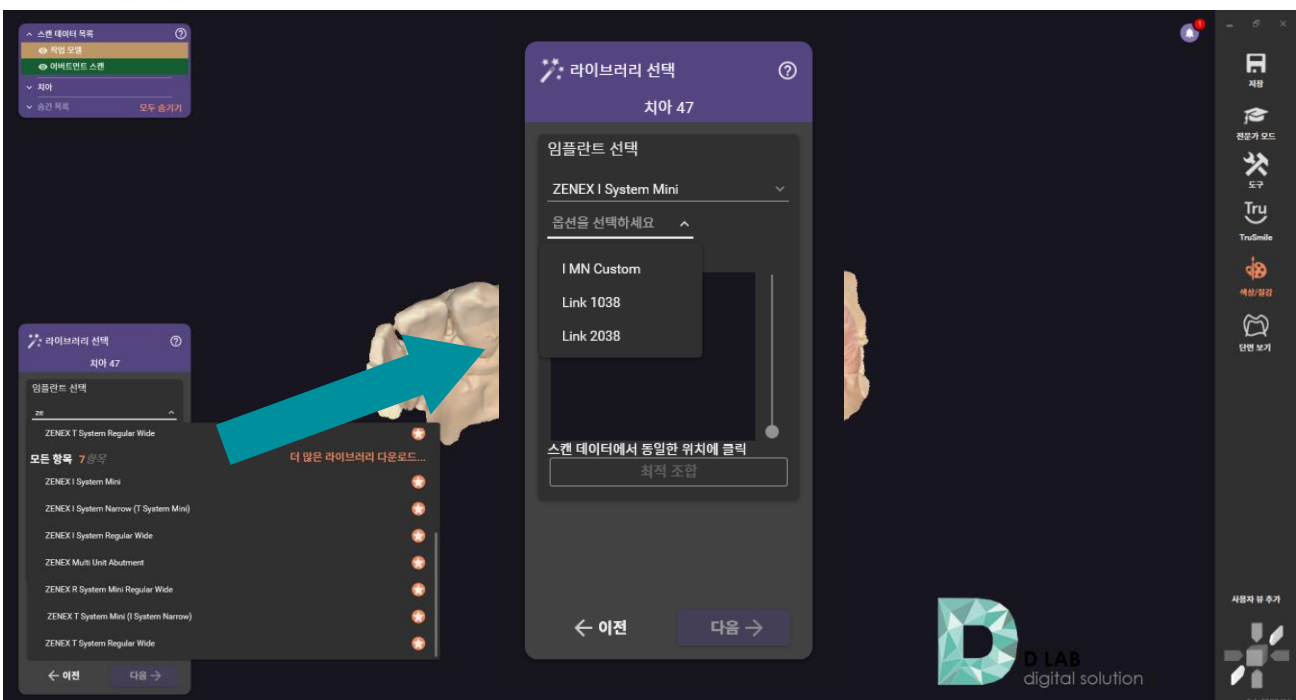


Design : Link type Abutment

- Select matching library

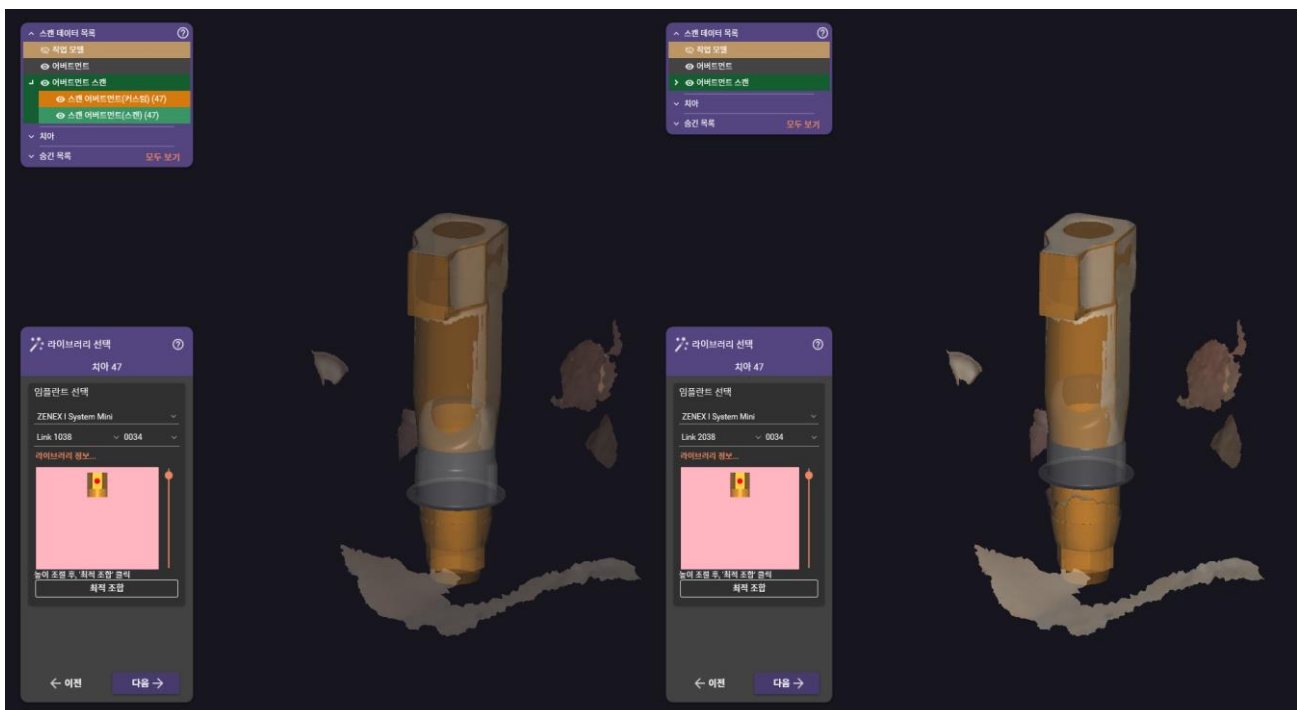
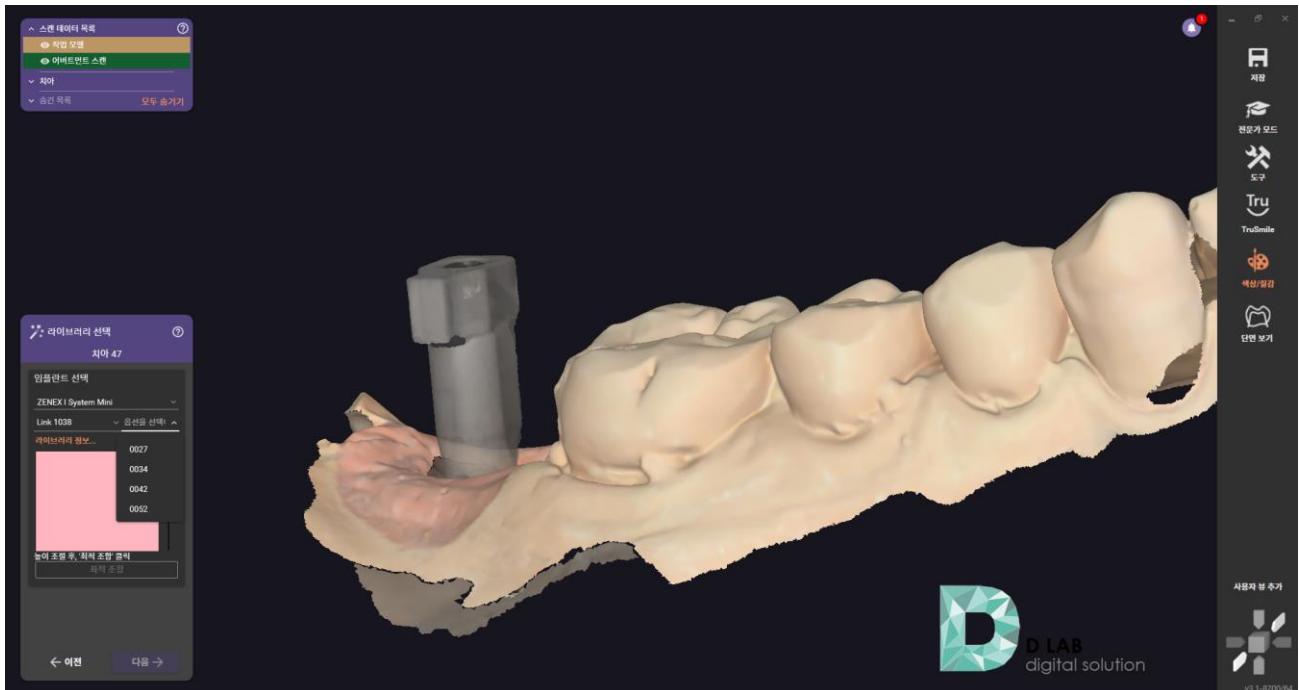


- Select Option



Design : Link type Abutment

- Select Link type

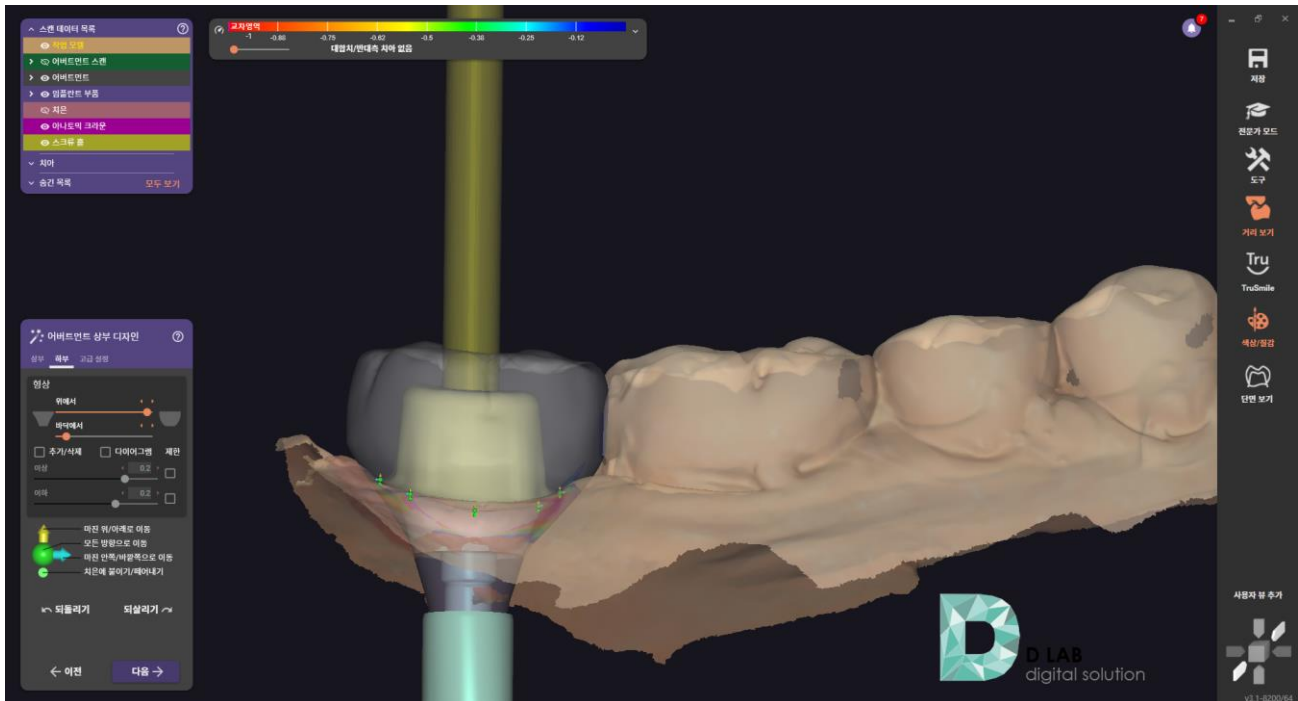


Link 1038

Link 2038

Design : Link type Abutment

Design Abutment

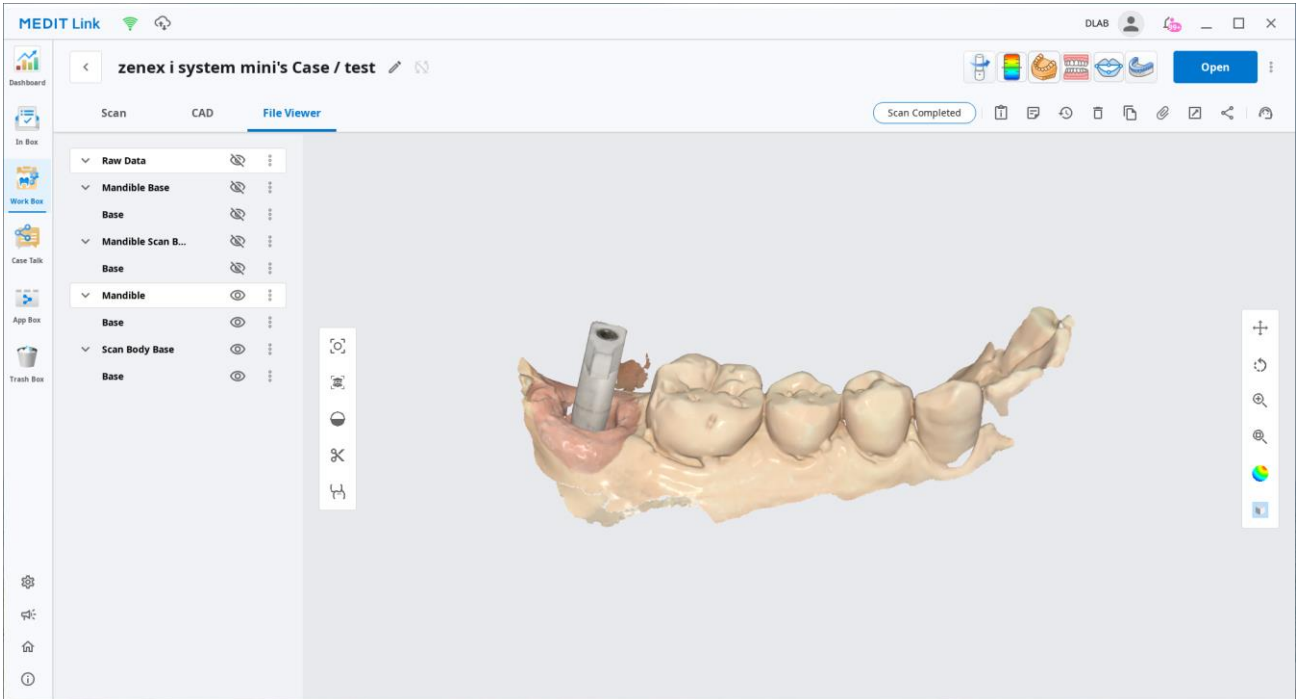


Complete design

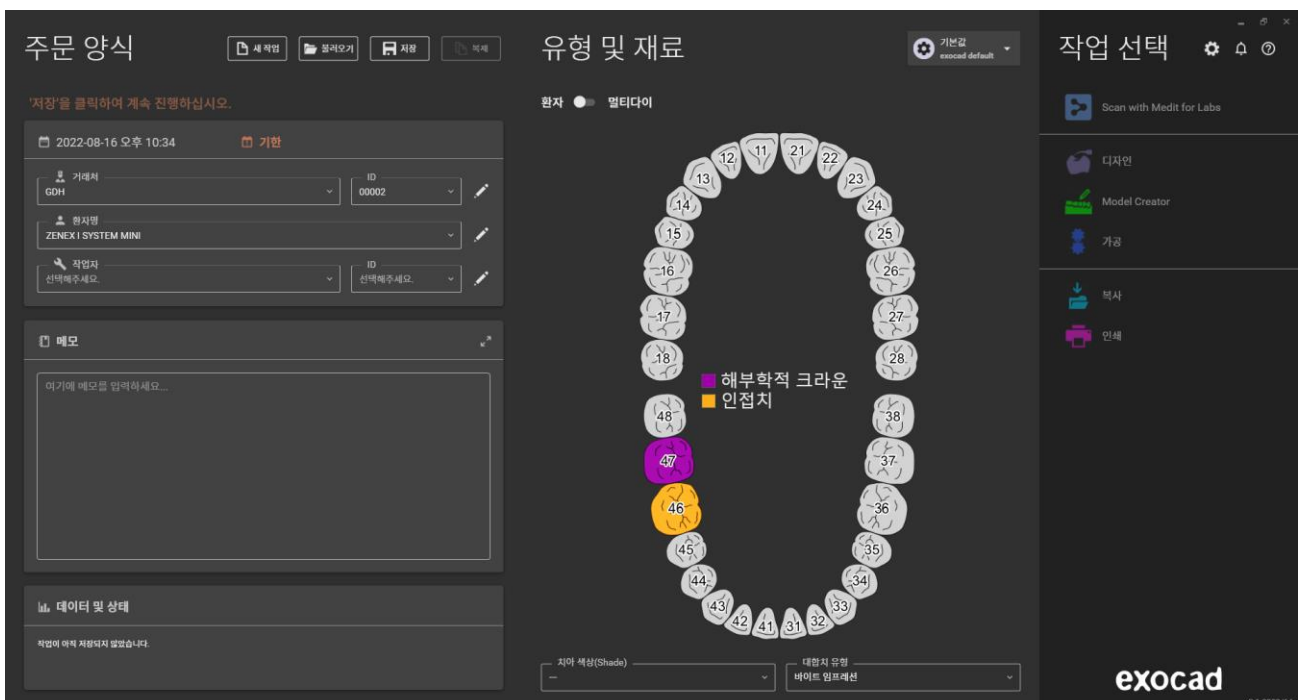


Design : Stock Abutment

- Prepare Scan Data



- Fill out Order form



Design : Stock Abutment

- Import Scan Data

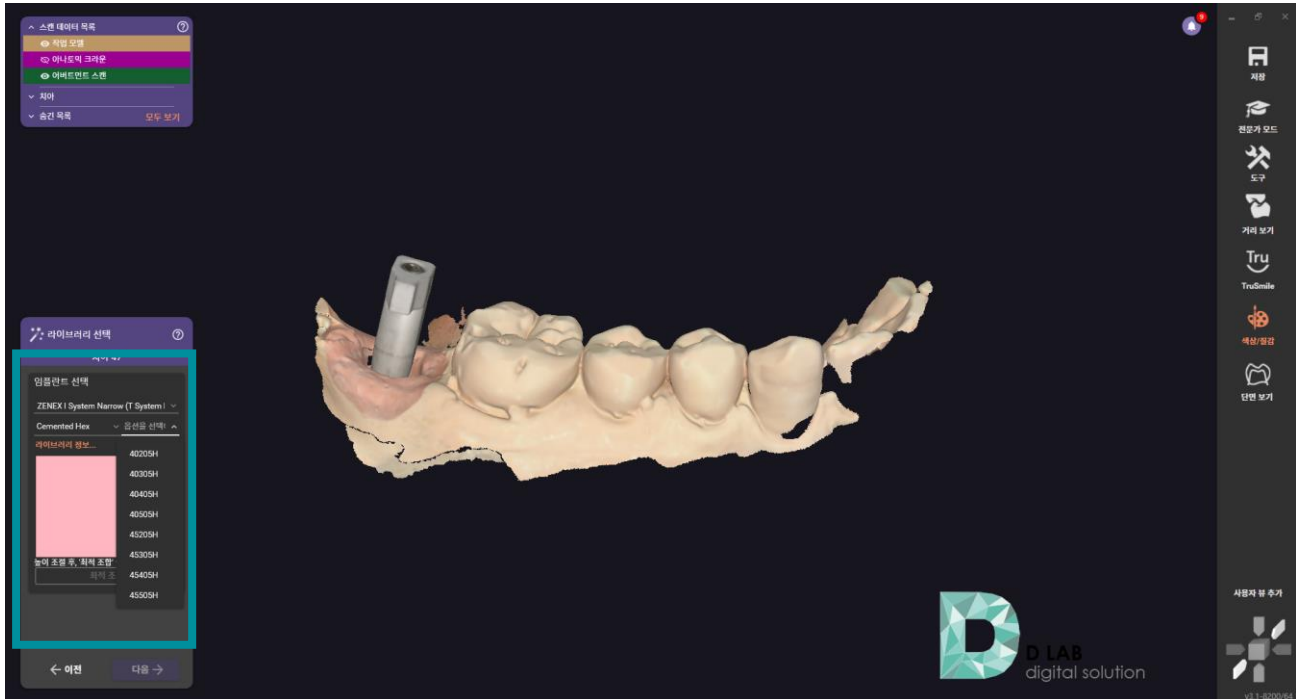


- Select library

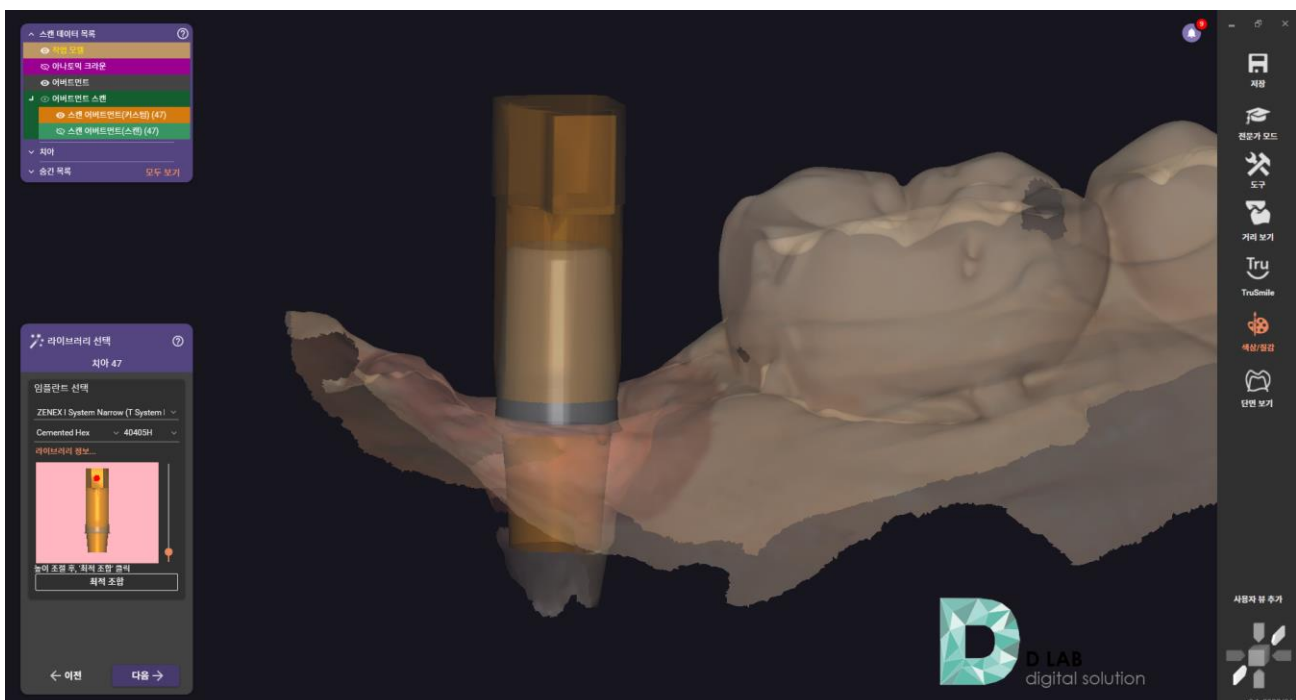


Design : Stock Abutment

- Select Abutment type and Option



- After making the mesh data translucent, Select the appropriate library



Design : Stock Abutment

- Complete design

