

ZENEX IMPLANT SYSTEM

DIGITAL LIBRARY

MANUAL

for 3shape 



Table of Contents

Requirements

Basic

Download the Latest ZENEX IMPLANT Digital Library

Import Library

Design

Design : Customized Abutment

Design : Link type Abutment

Design : Cemented Abutment

Design : Angled Abutment

Design : Model Builder

Requirements

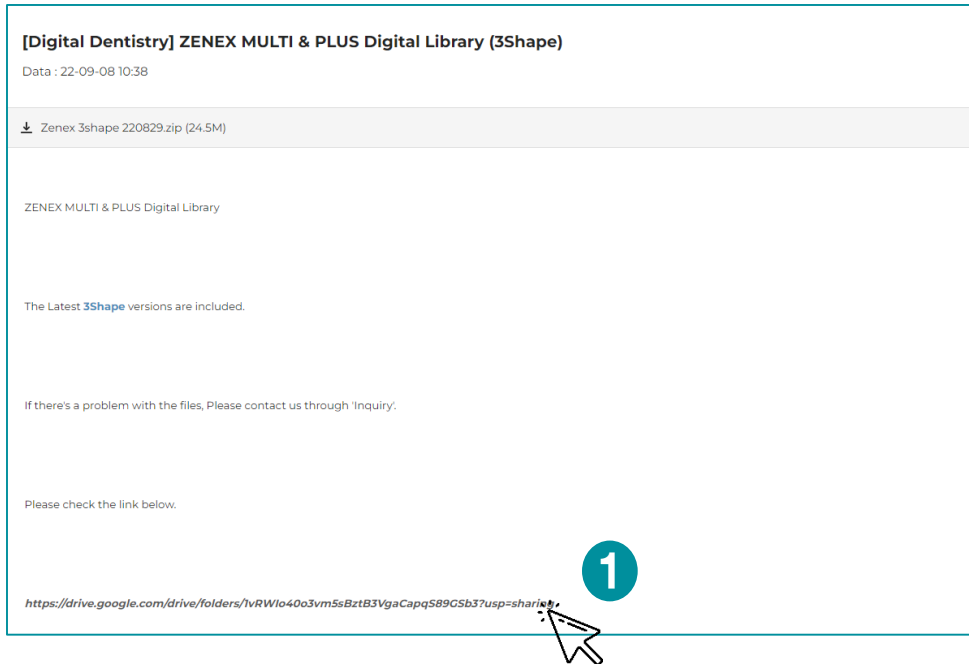
- You can use ZENEX Digital abutments with IZEN IMPLANT Digital Libraries.
(ZENEX ScanBody, ZENEX Ti–Link Abutment, ZENEX Ti–Blank Abutment)
- You can download the IZEN IMPLANT Digital Libraries on our website at:
[Here](#)

Potential preconditions for usage of our libraries:

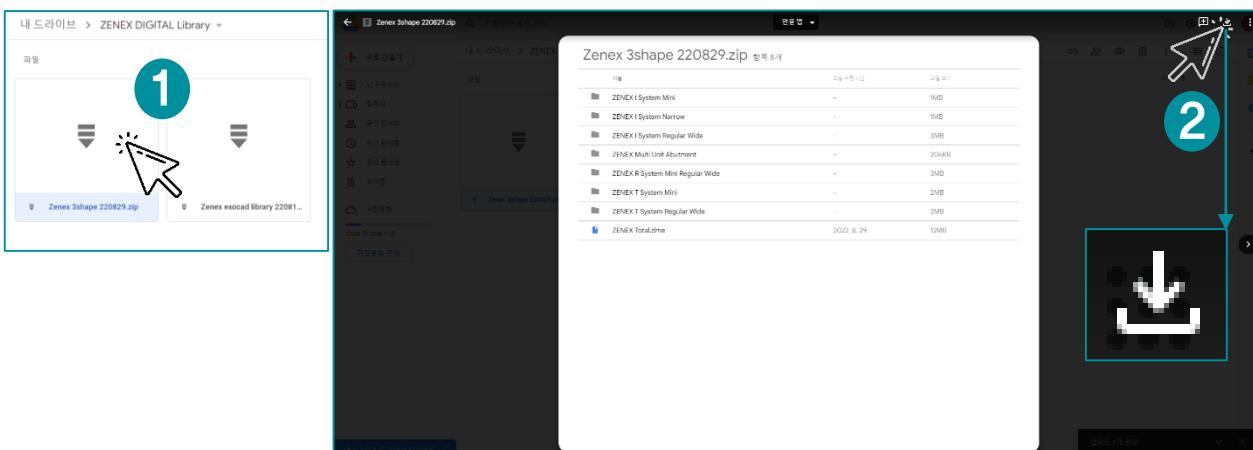
- Dental System 2016 or newer
- Abutment Designer Module
- Implant Bars/Bridge Design Module
- Model Builder STL

Download the Latest ZENEX Digital Library

1. To download the latest ZENEX Digital Library, go to the IZEN IMPLANT Website at the following link: [Here](#)

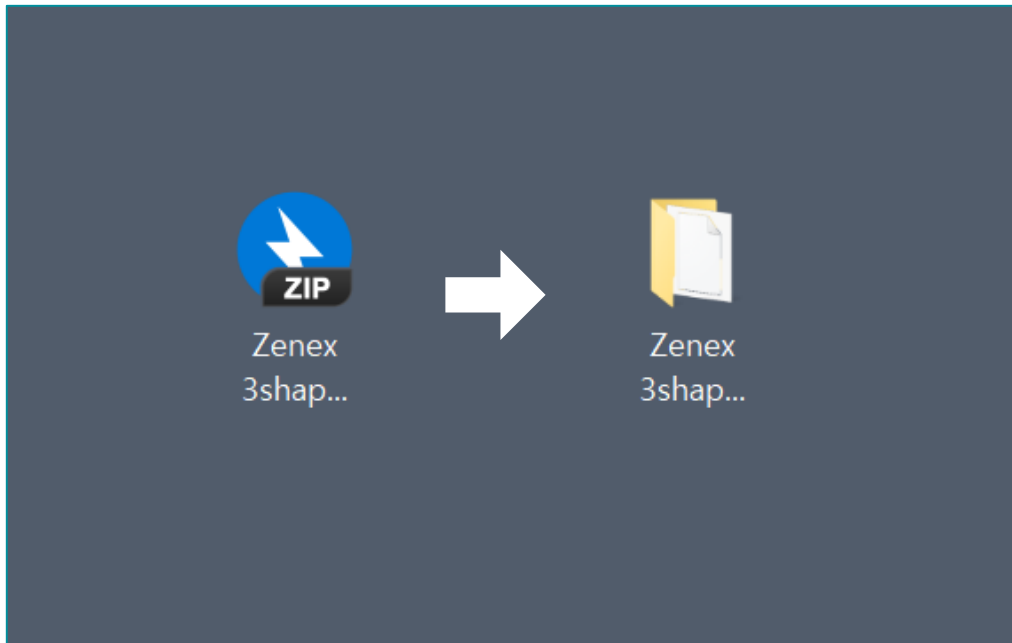


2. Follow the Download Link and Download the Library as the compressed file to your desktop (or other preferred location)



Extract the downloaded compressed file

1. Extract the downloaded compressed file



2. The library files are included in the unpacked folder

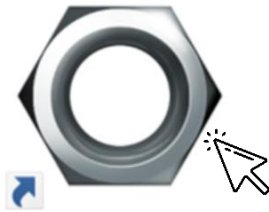
A screenshot of a Windows File Explorer window showing the contents of a folder named 'Zenex 3shape 220829'. The window title bar shows the folder name and a search bar with the text 'Zenex 3shape 220829 검색'. The table below lists the files and folders contained within.

이름	수정한 날짜	유형	크기
ZENEX I System Mini	2022-08-30 오전 1:29	파일 폴더	
ZENEX I System Narrow	2022-08-30 오전 1:29	파일 폴더	
ZENEX I System Regular Wide	2022-08-30 오전 1:29	파일 폴더	
ZENEX Multi Unit Abutment	2022-08-30 오전 1:29	파일 폴더	
ZENEX R System Mini Regular Wide	2022-08-30 오전 1:29	파일 폴더	
ZENEX T System Mini	2022-08-30 오전 1:29	파일 폴더	
ZENEX T System Regular Wide	2022-08-30 오전 1:29	파일 폴더	
ZENEX Total.dme	2022-08-29 오후 11:51	DME 파일	1.4 KB



Import Library

1. Click the 3Shape Dental System Control Panel icon on your personal computer



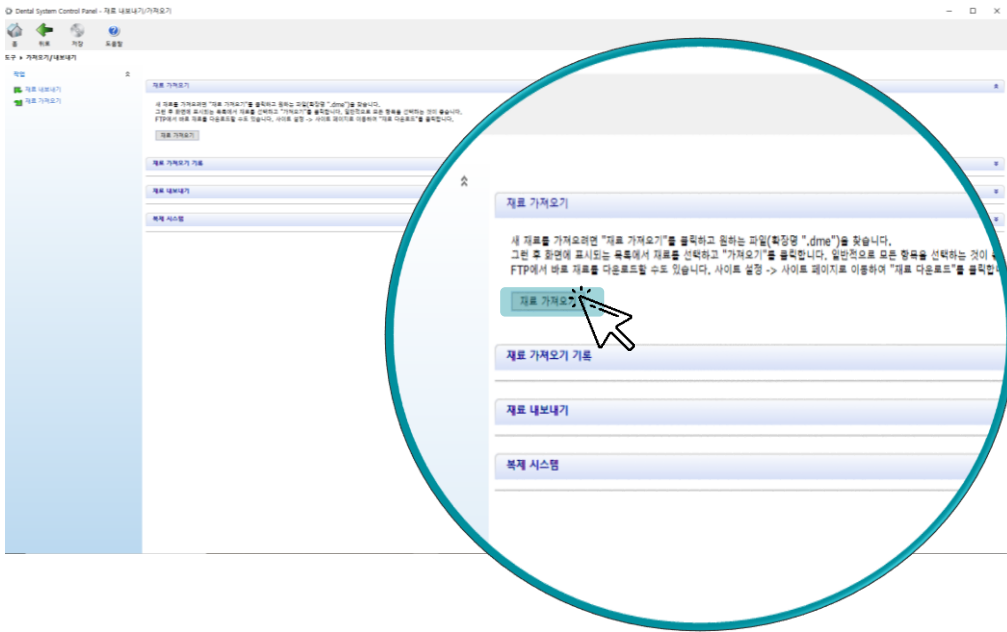
3Shape Dental Control Panel

2. Click **“Tools → Import/Export”**

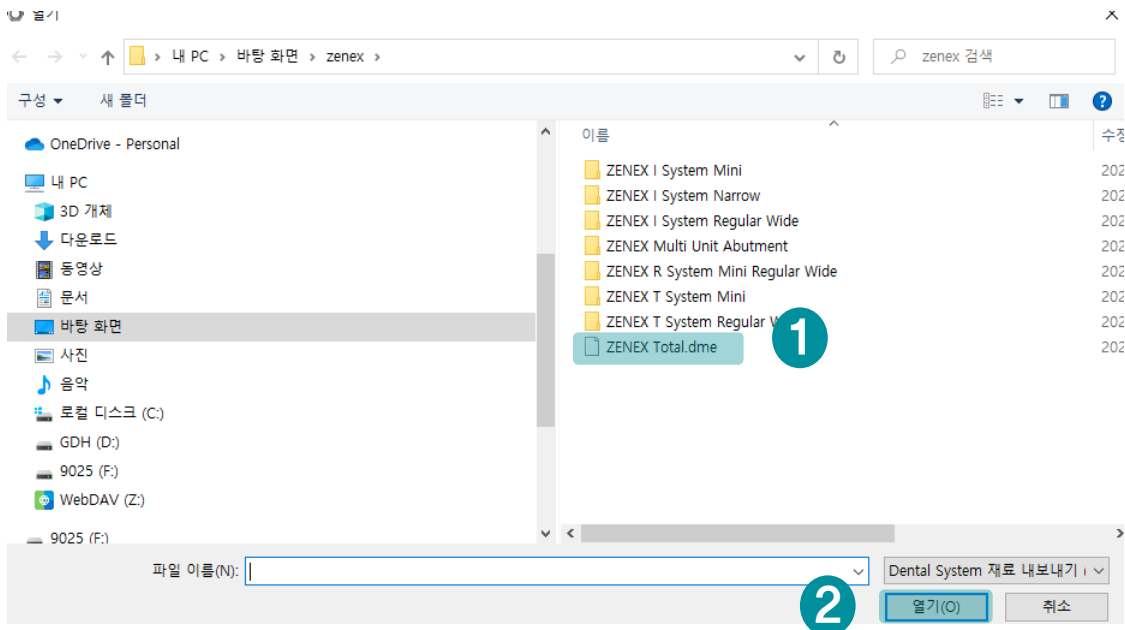


Import Library

3. Click the Import materials

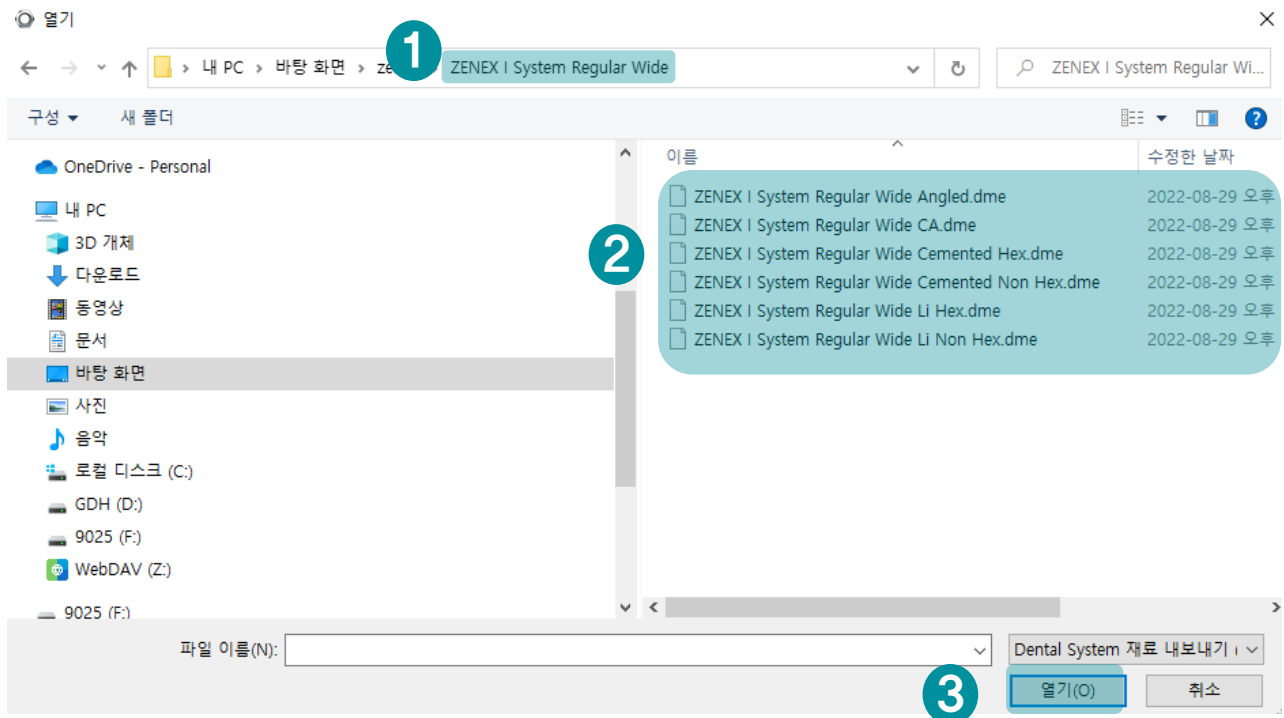


4-1. Select “ZENEX Total.dme” and open to import total library at once



Import Library

4-2. To import only the necessary files, select the system and open the file in the folder



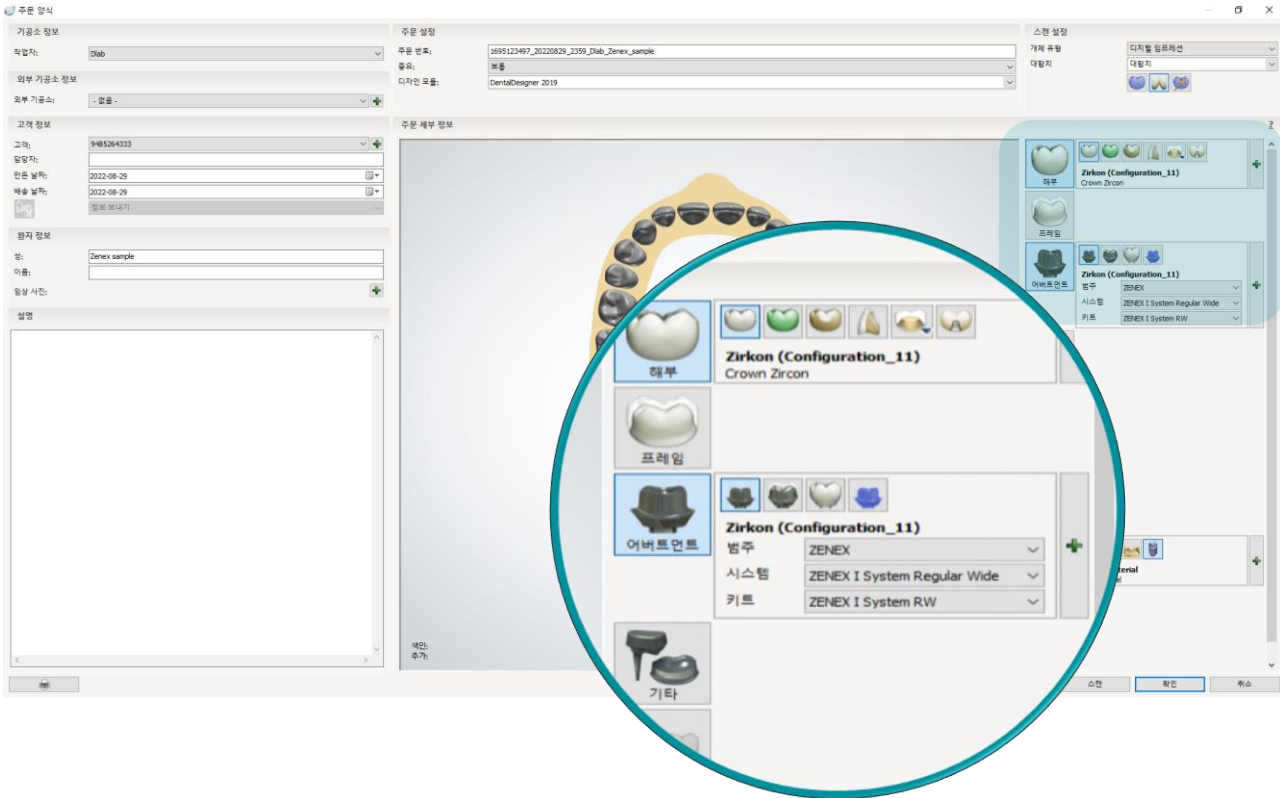
5. Run Dental Designer on your personal computer



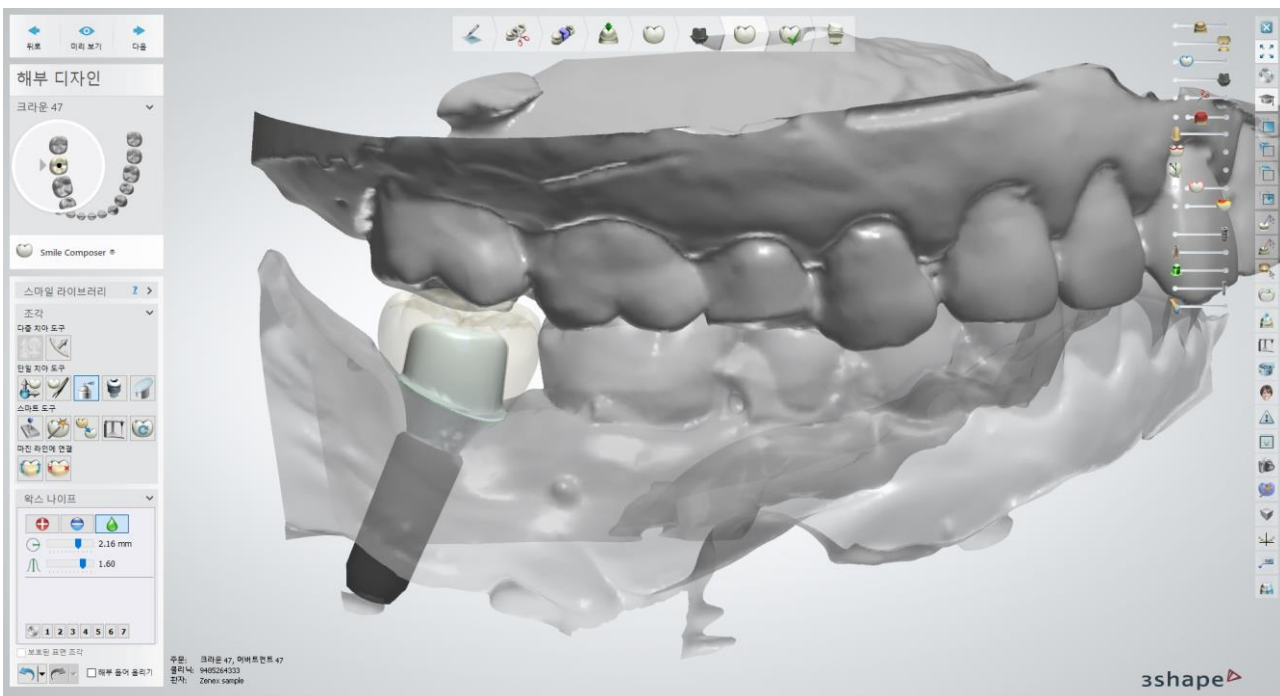
3Shape Dental Designer

Design : Customized Abutment

- Select System to write DB

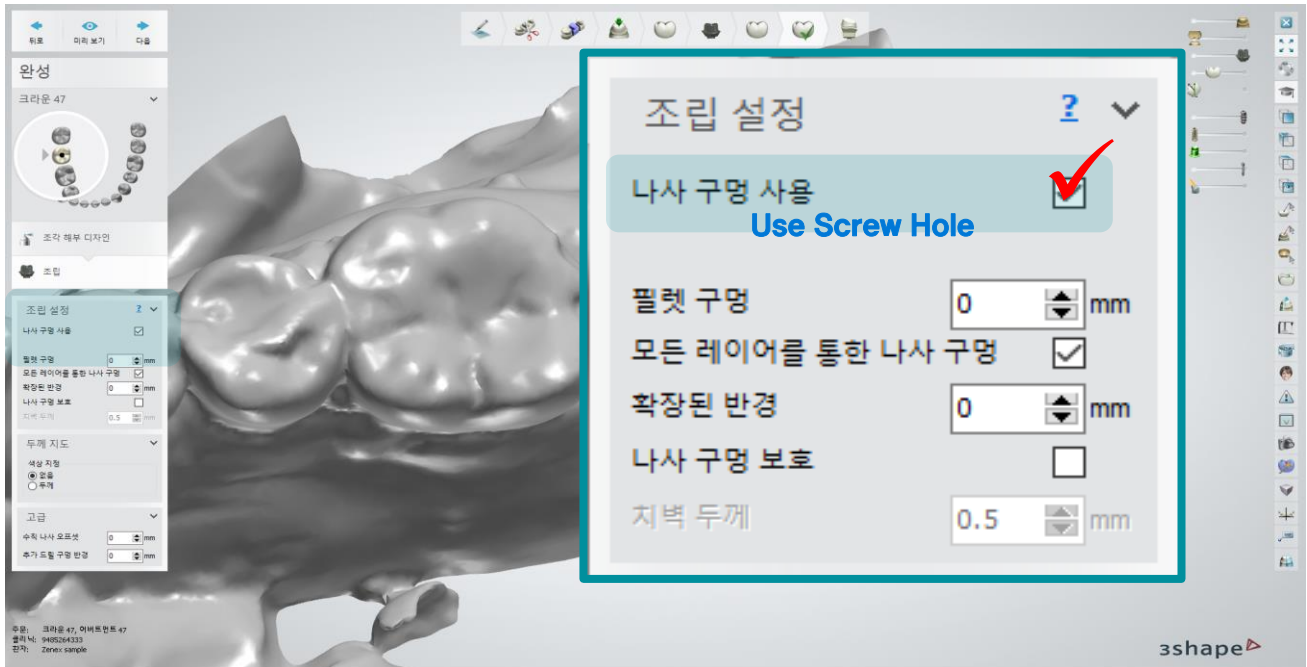


- Design Prosthesis



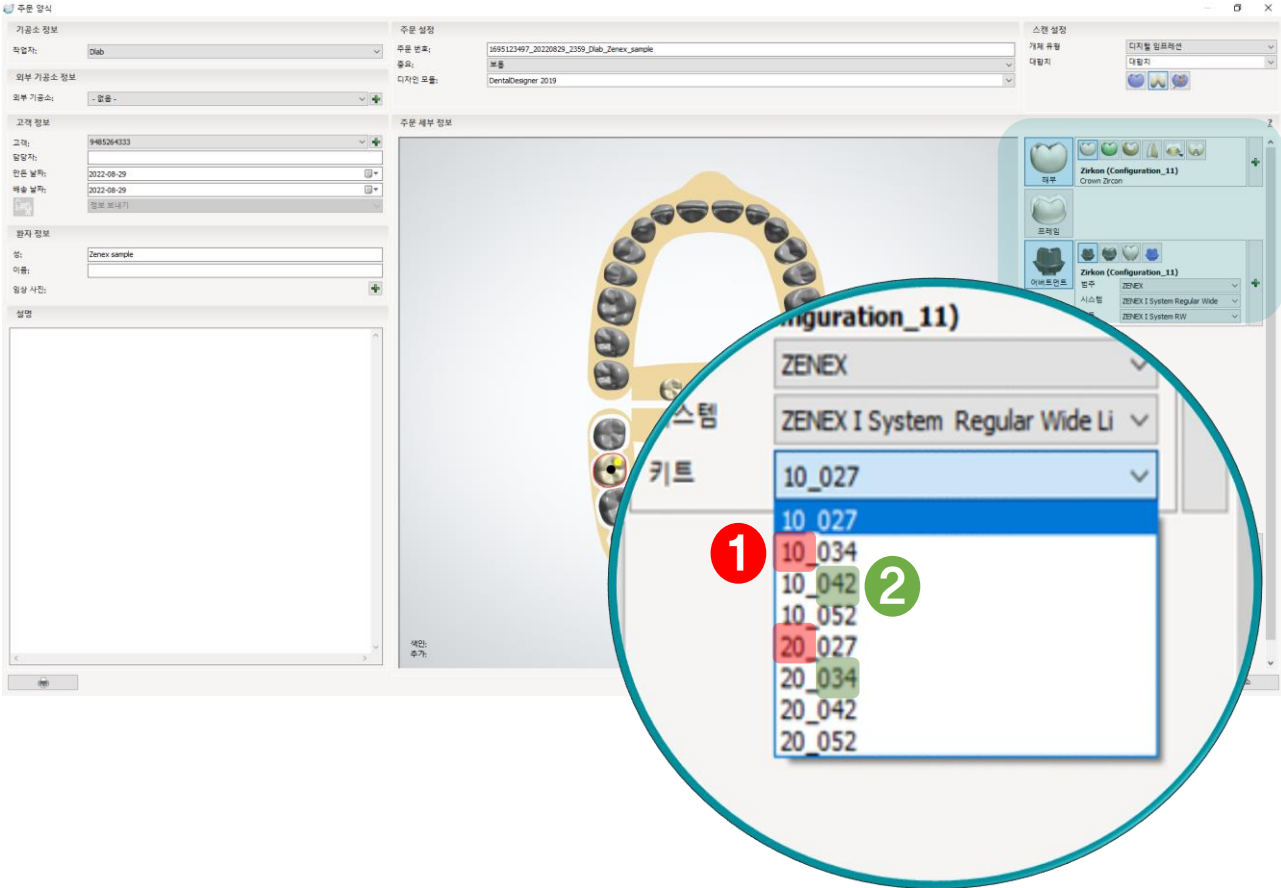
Design : Customized Abutment

- When making SCRP, Check “Use Screw Hole”

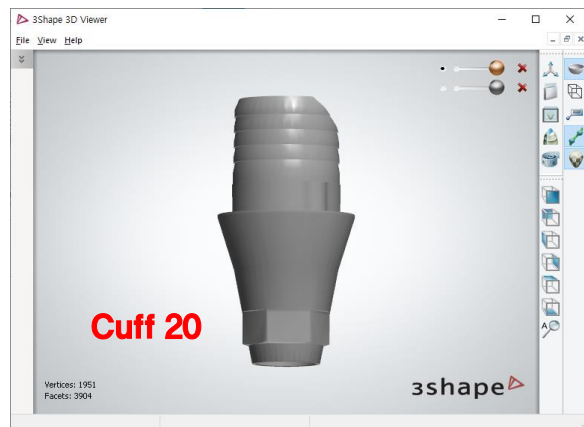


Design : Link Type Abutment

- Select System to write DB



① 10 and 20 refer to the cuff height of the link

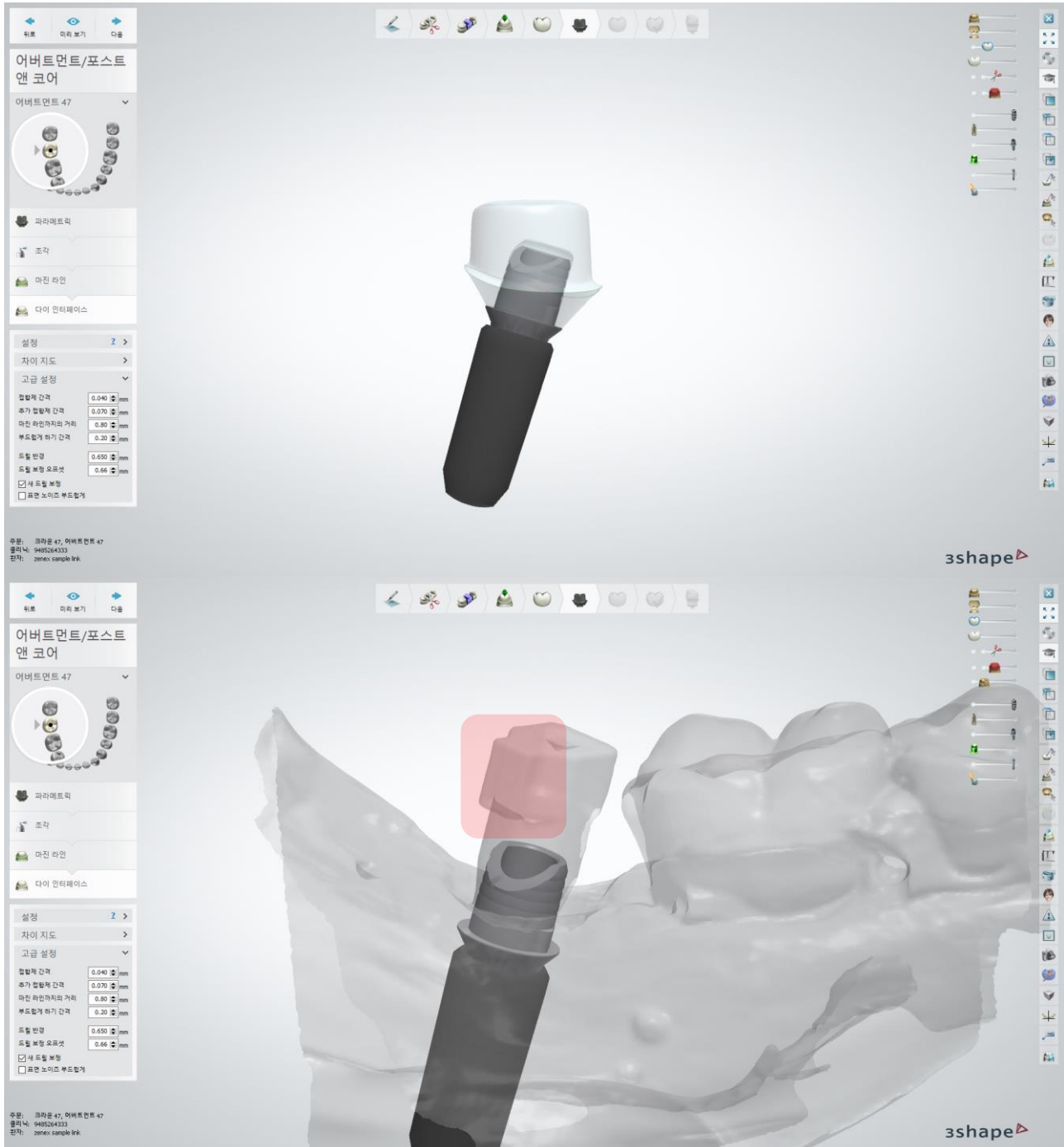


② 027, 034, 042, 052 refers to **Cement space**

You can choose appropriate space according to the processing condition

Design : Link Type Abutment

▪ Design Prosthesis

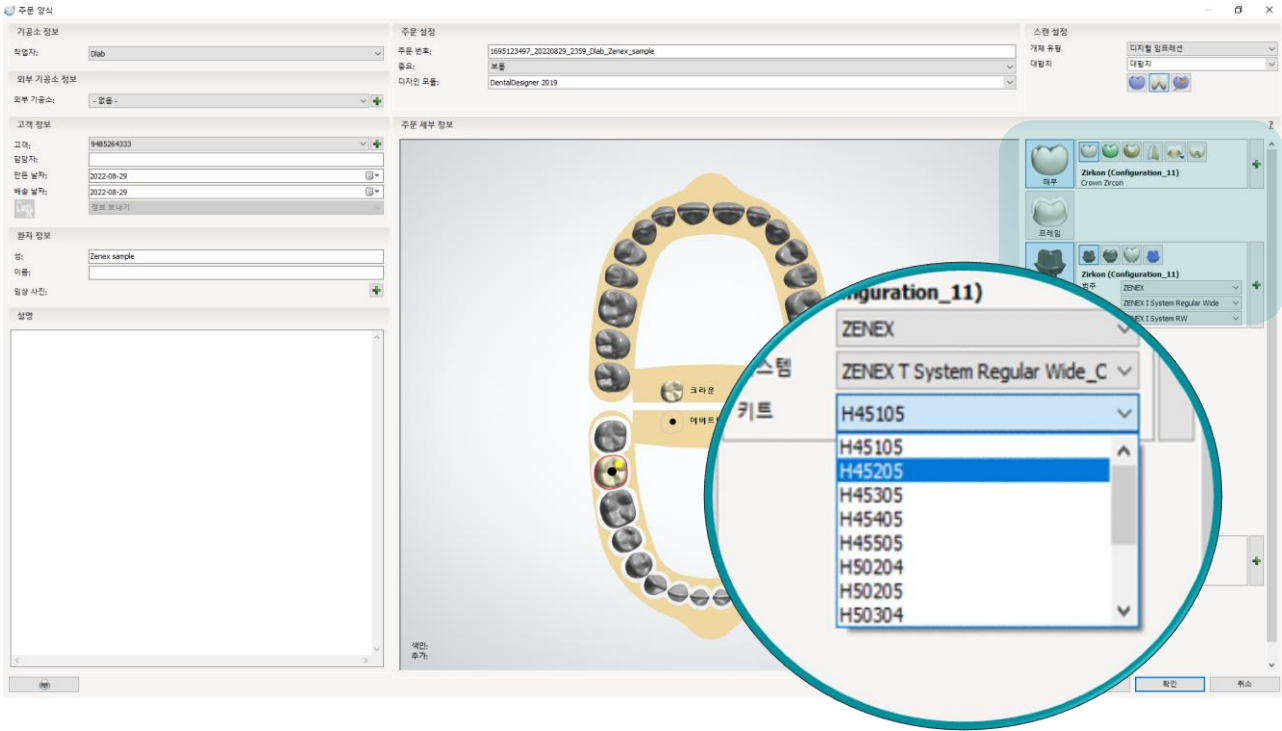


The direction of the protrusion of the scan abutment coincides with the cutting space of the link

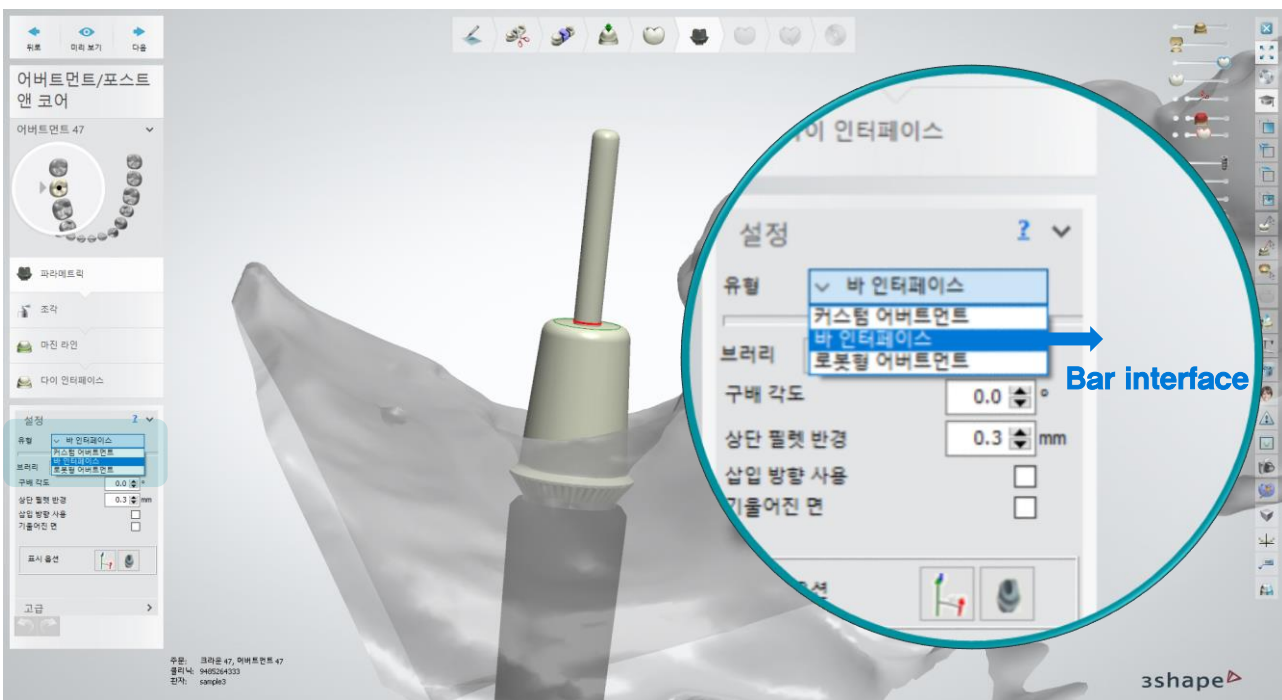
※ Pay close attention to the direction when placing scan abutment

Design : Cemented Abutment

- Select System to write DB and Select Abutment type for the case

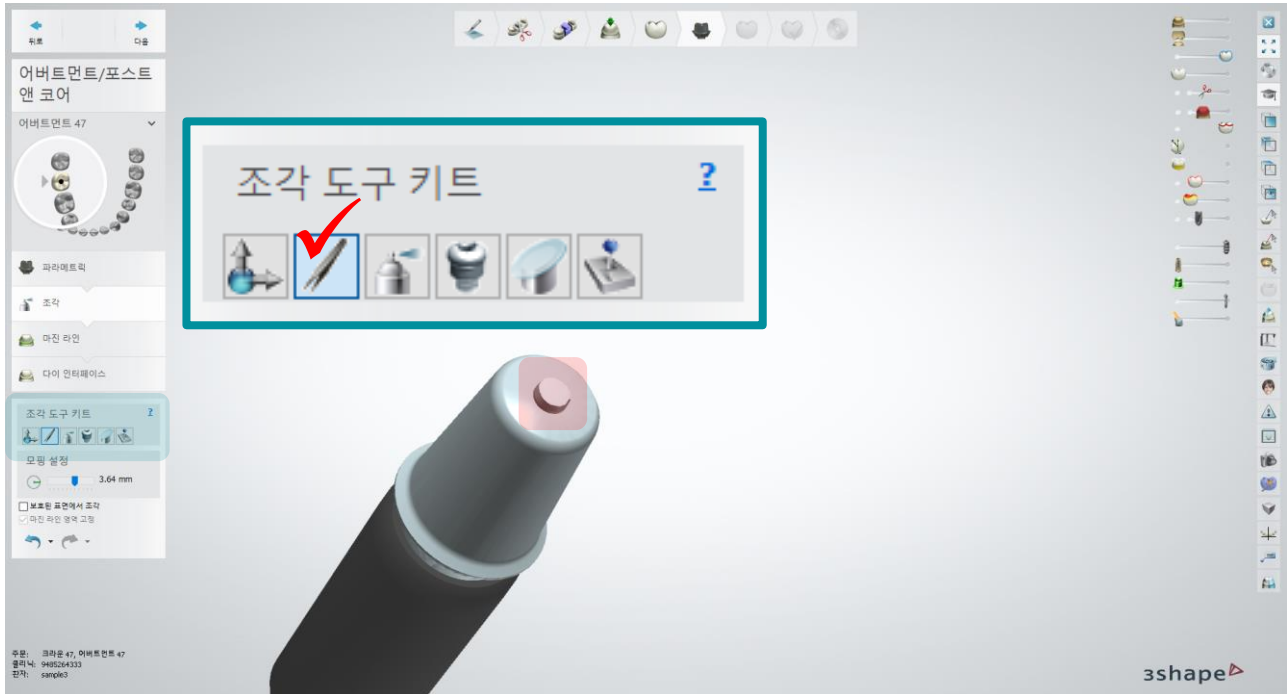


- Select **“Bar interface”** from abutment design type

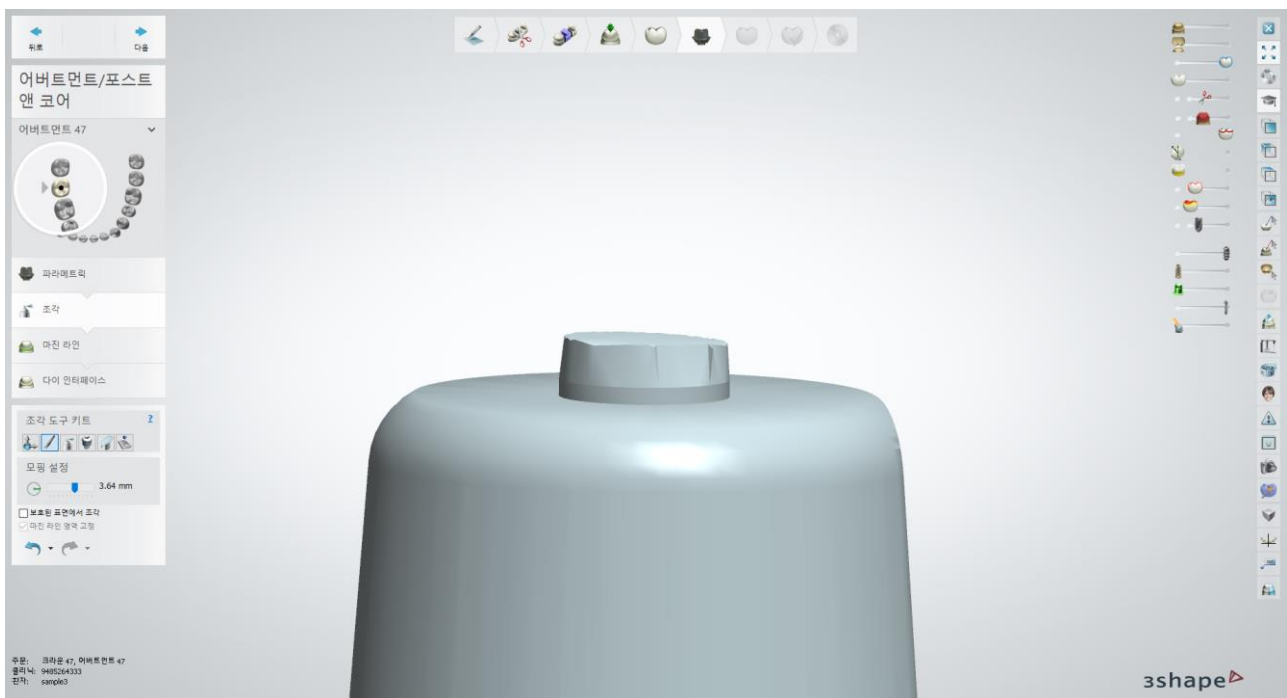


Design : Cemented Abutment

- Use Crop plane tool to cut the bar interface

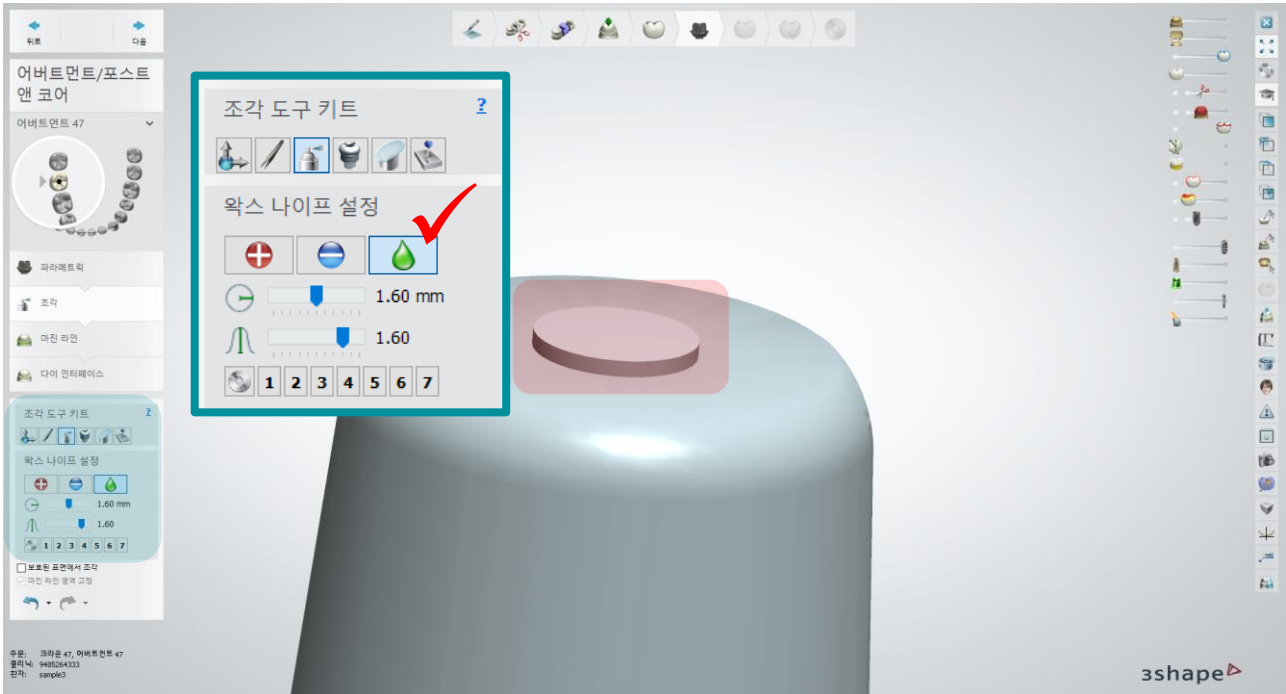


- Leave enough margin



Design : Cemented Abutment

- Use Crop plane tool to cut the bar interface

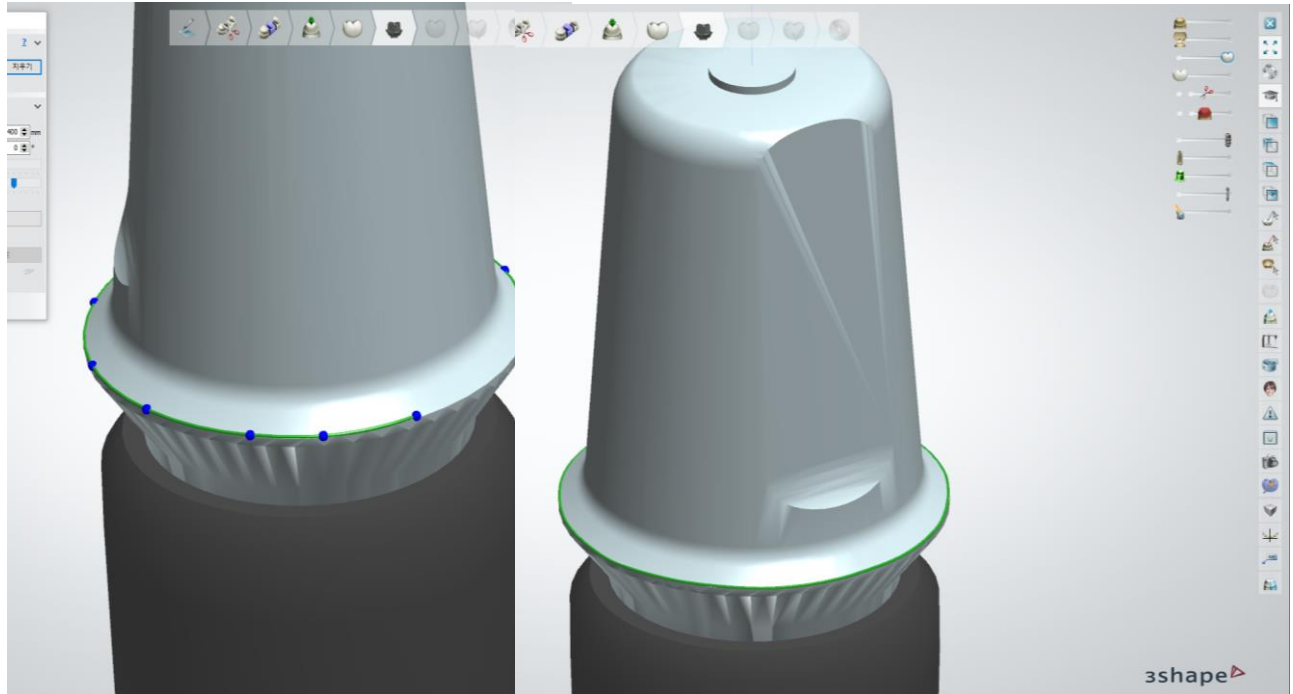


- Erase the margin line

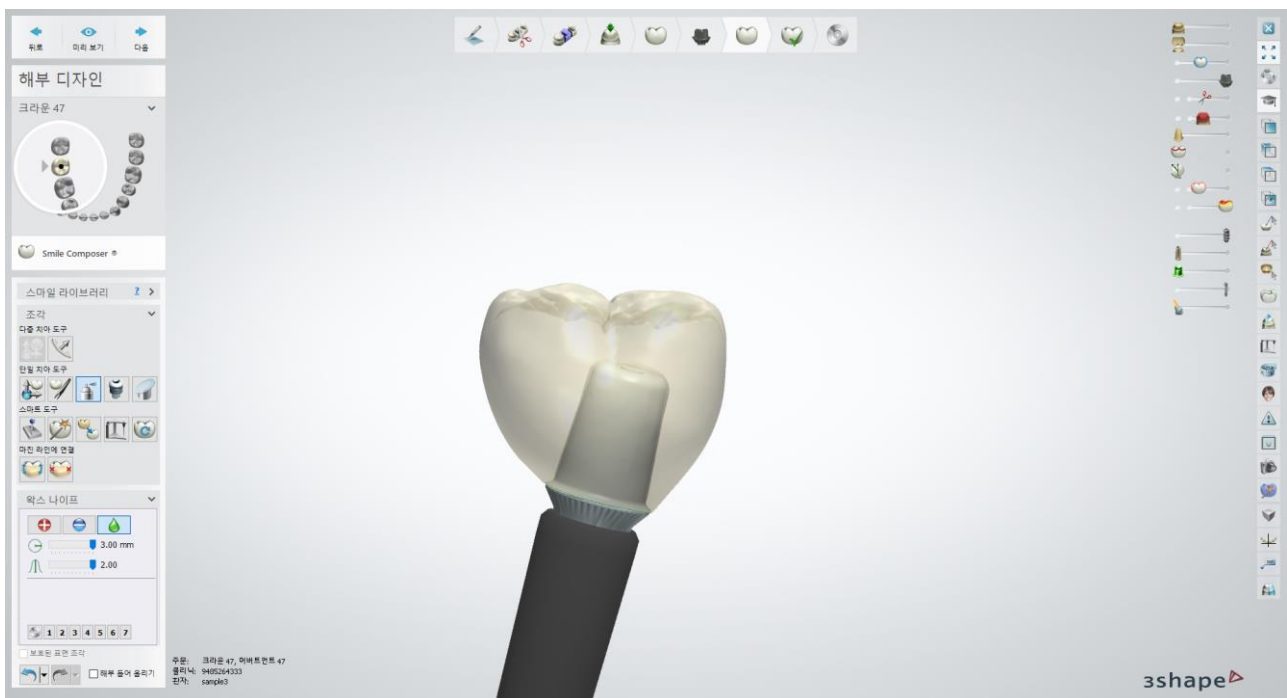


Design : Cemented Abutment

- Click on the margin line and complete drawing margin

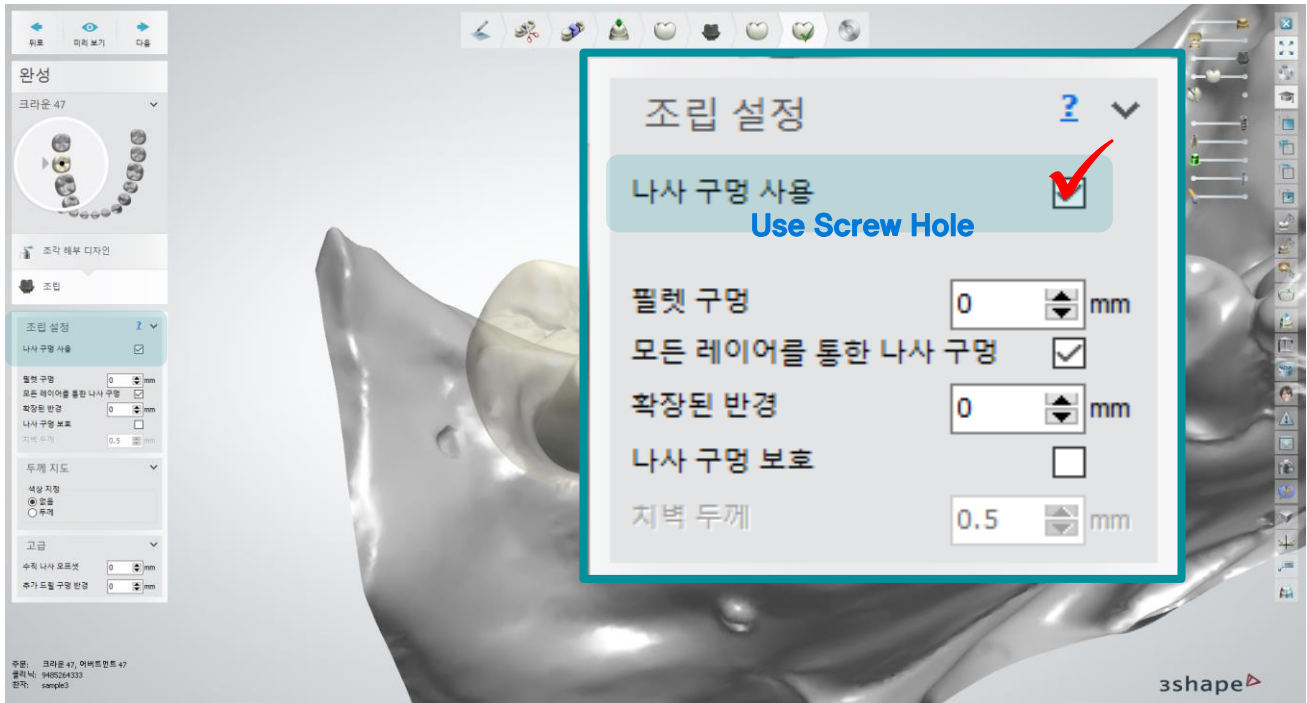


- Design Prosthesis



Design : Cemented Abutment

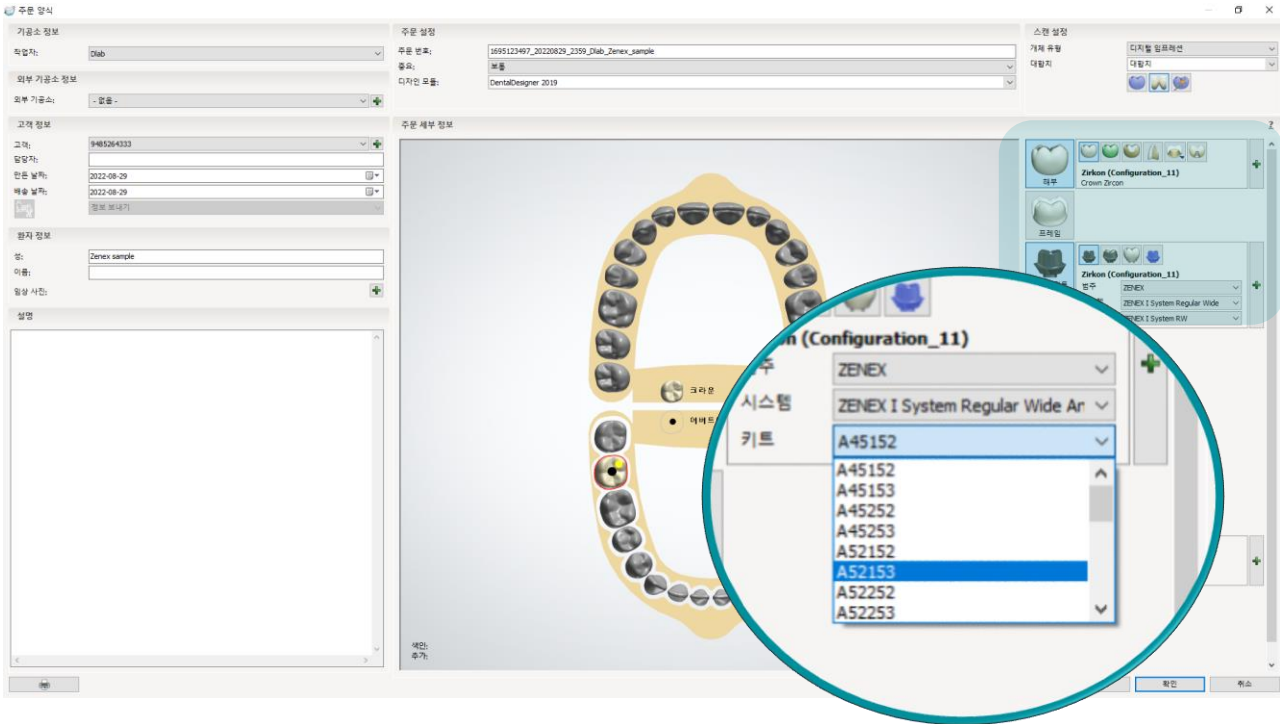
- Check “Use Screw Hole”



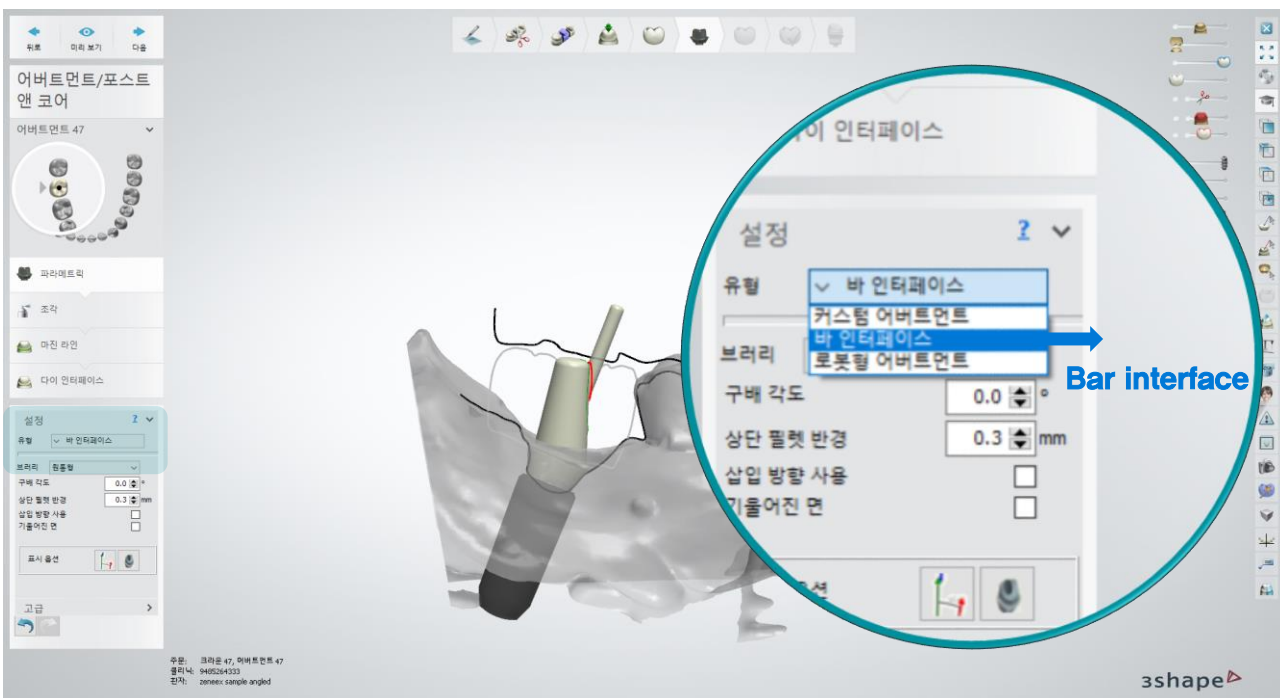
Design : Angled Abutment

- Select System to write DB and Select Abutment type for the case

※ Check the Angled Abutment type on the next page



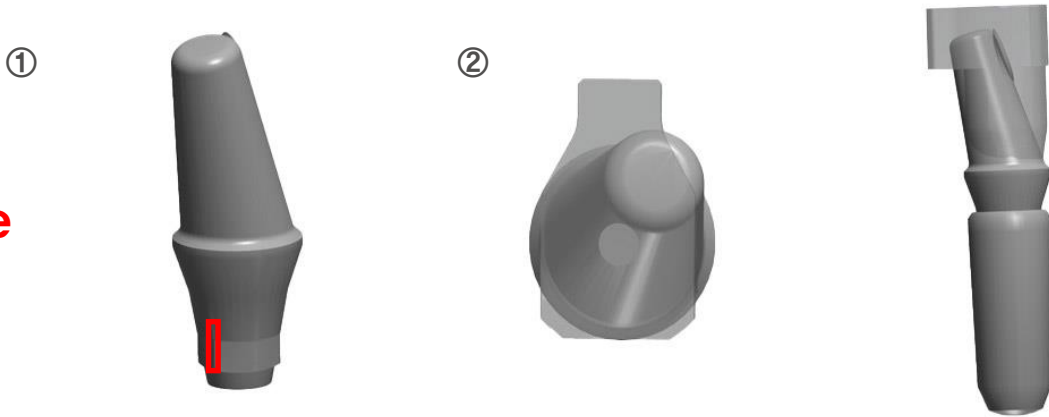
- Select “Bar interface” from abutment design type



Design : Angled Abutment

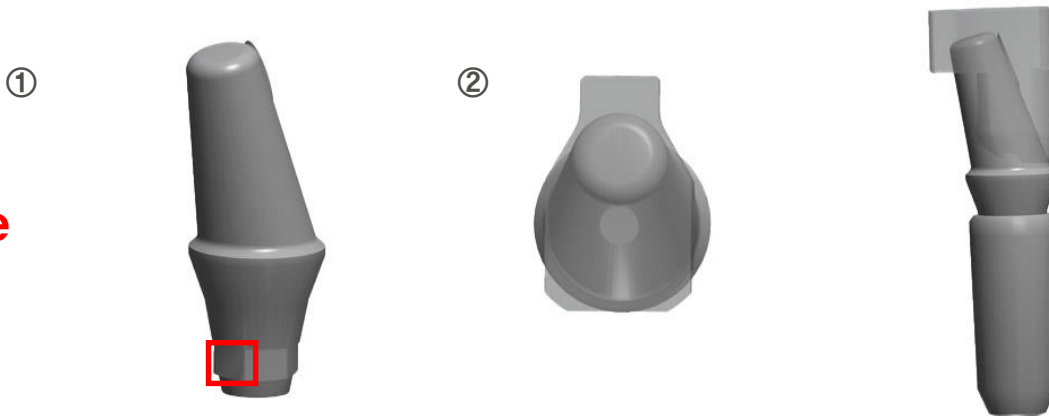
- Angled Abutment Type

A Type



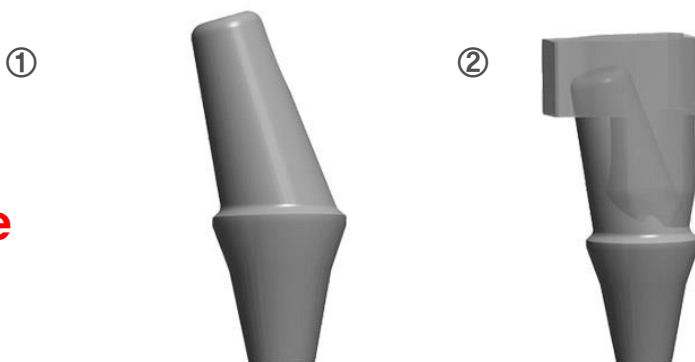
- ① 15 degree inclination toward the **angled direction** of the abutment hex
- ② Rotated 15 degrees clockwise on the ScanBody protrusion

B Type



- ① 15 degree inclination toward **plane direction** of the abutment hex
- ② Same direction as ScanBody protrusion

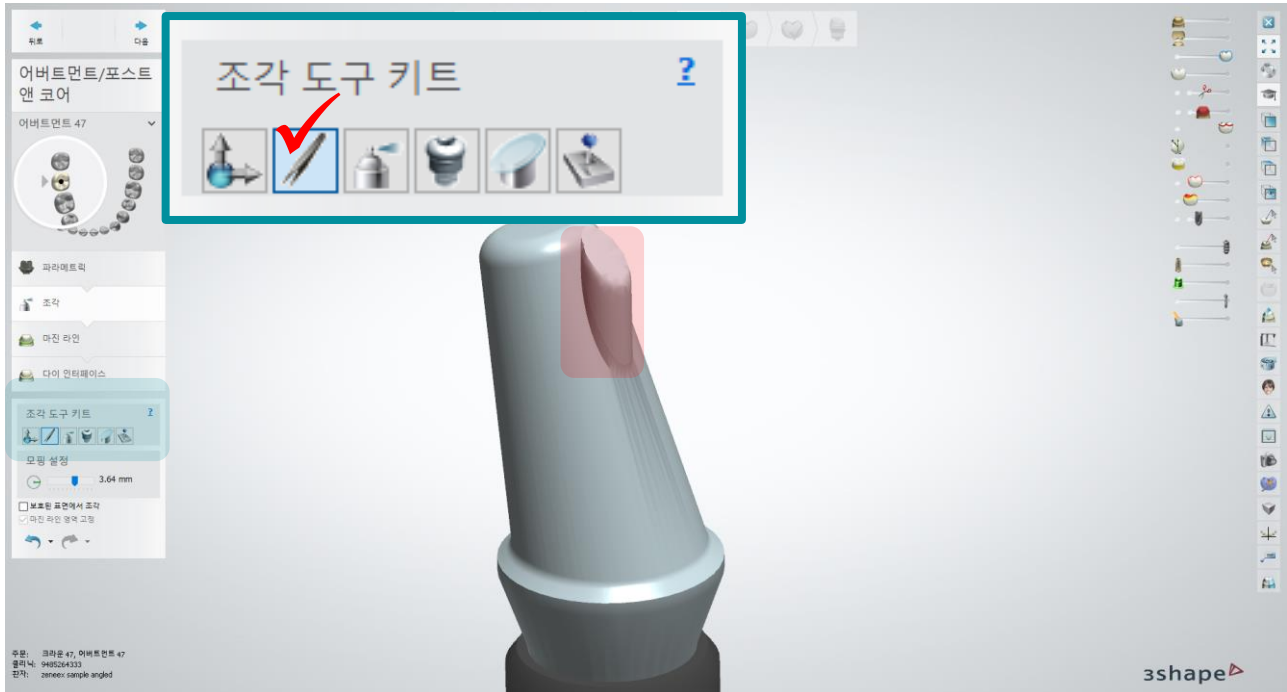
N Type



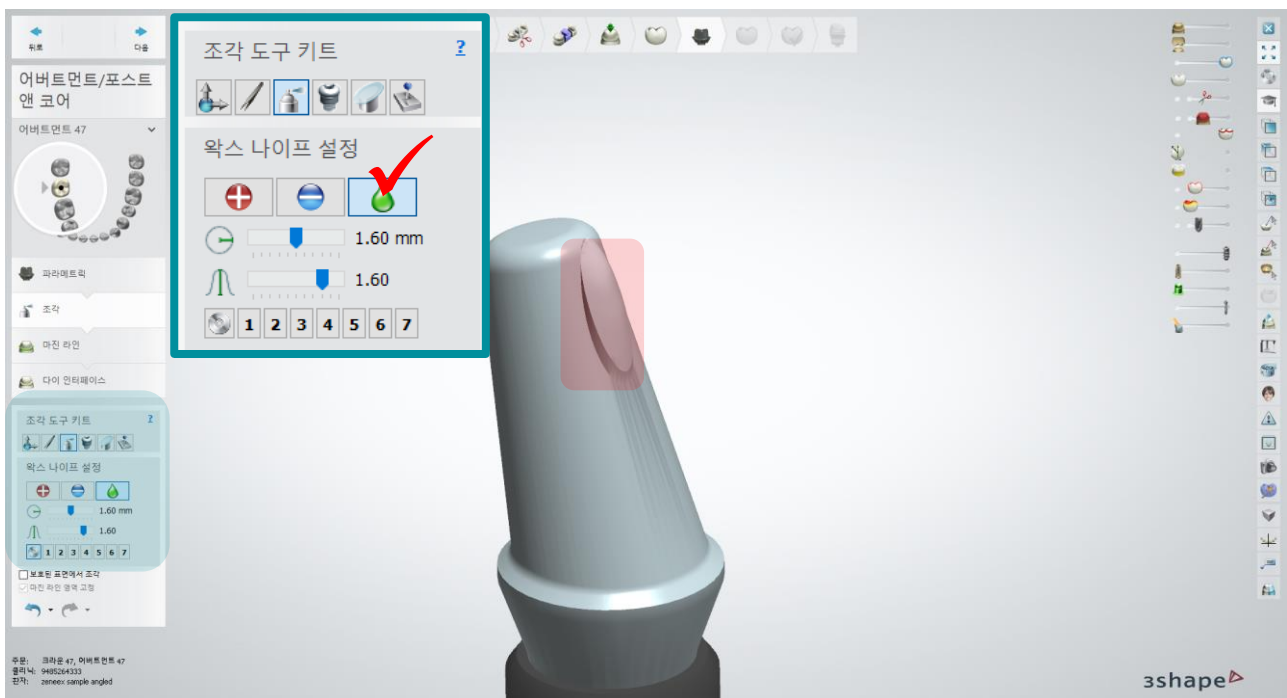
- ① Non-Hex Abutment
- ② Same direction as ScanBody protrusion (Same as B Type)

Design : Angled Abutment

- Use Crop plane tool to cut the bar interface

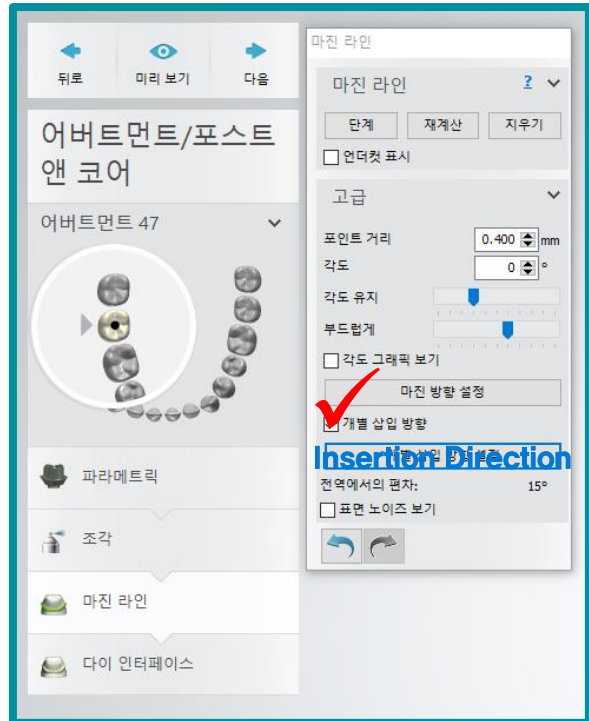
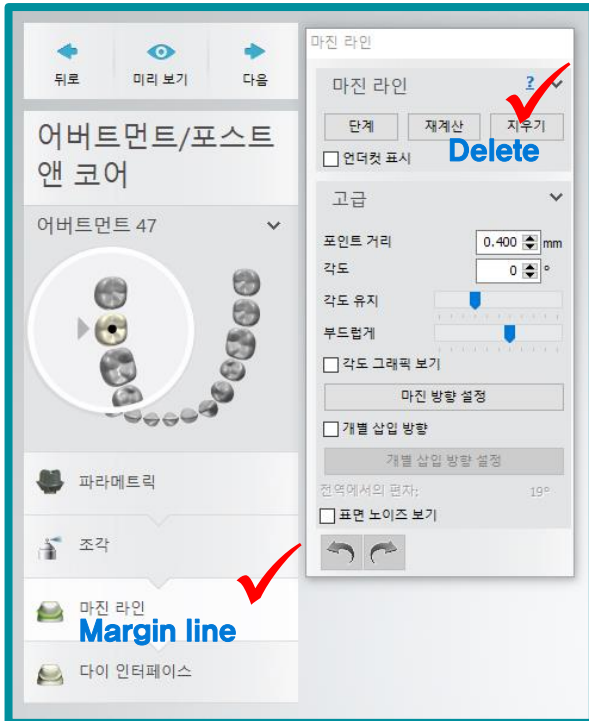
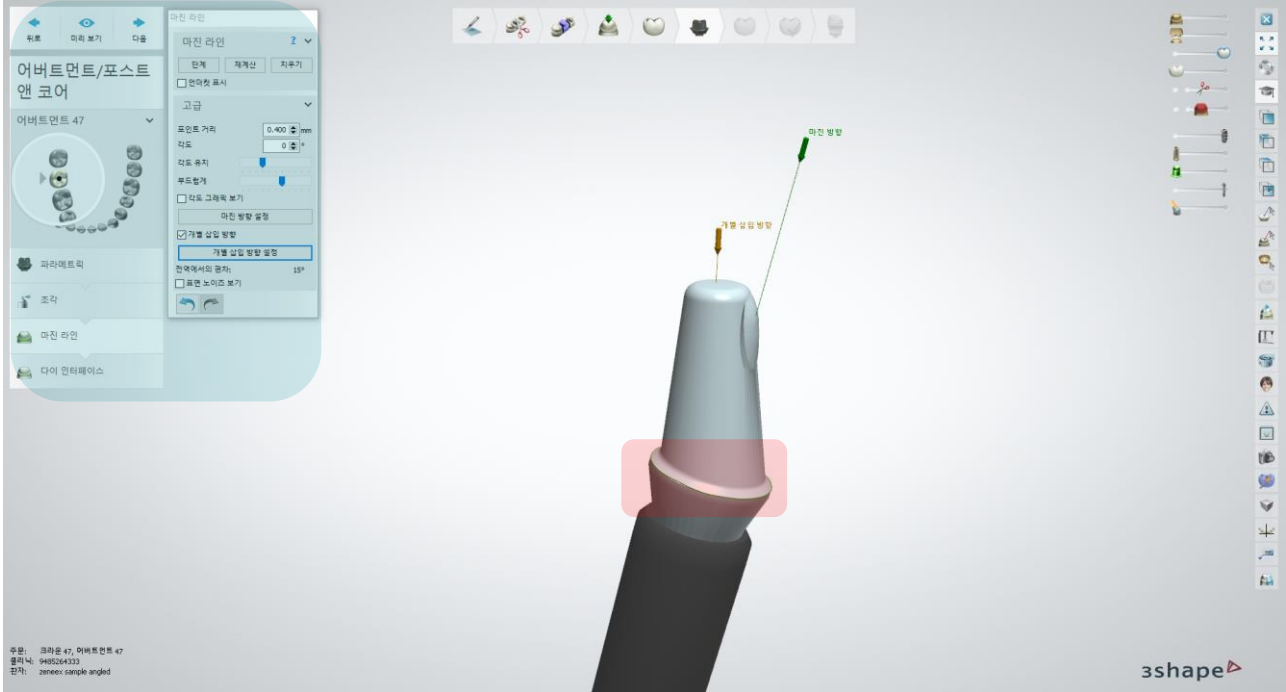


- Smooth the margin area with refine tool



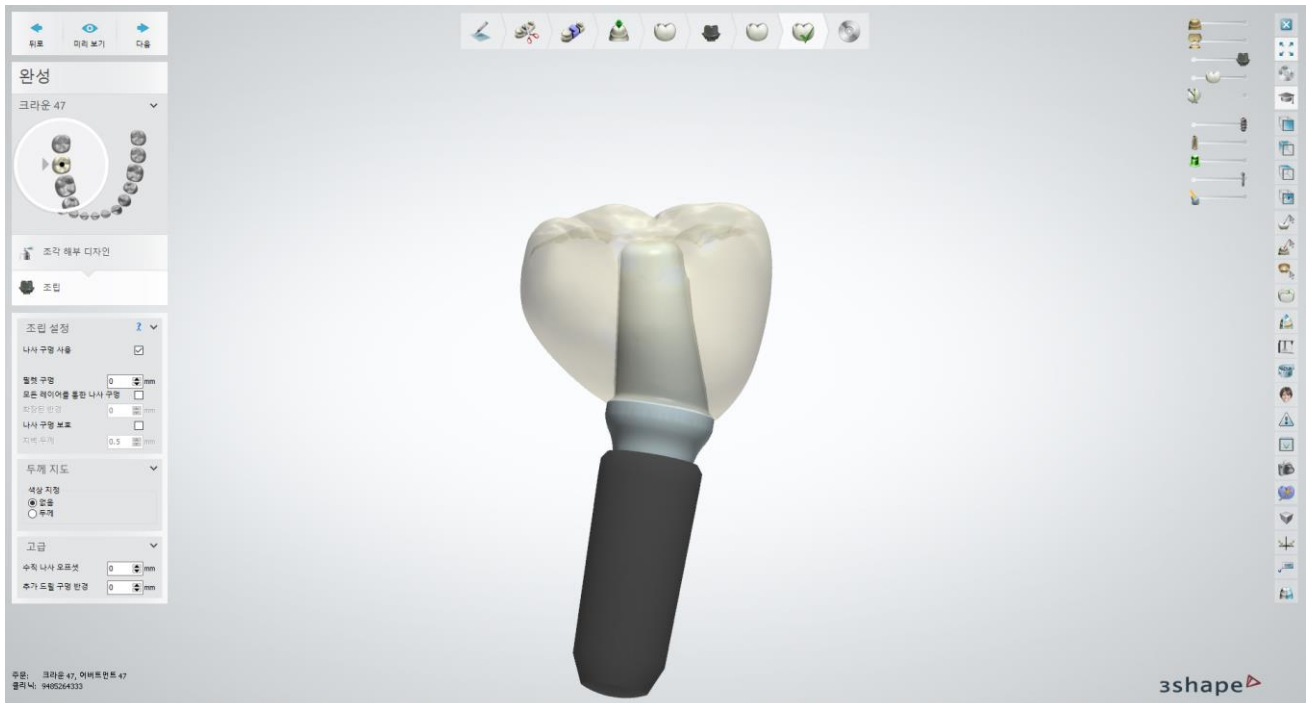
Design : Angled Abutment

- Erase ► Draw margin line with mouse ► Set the insertion direction

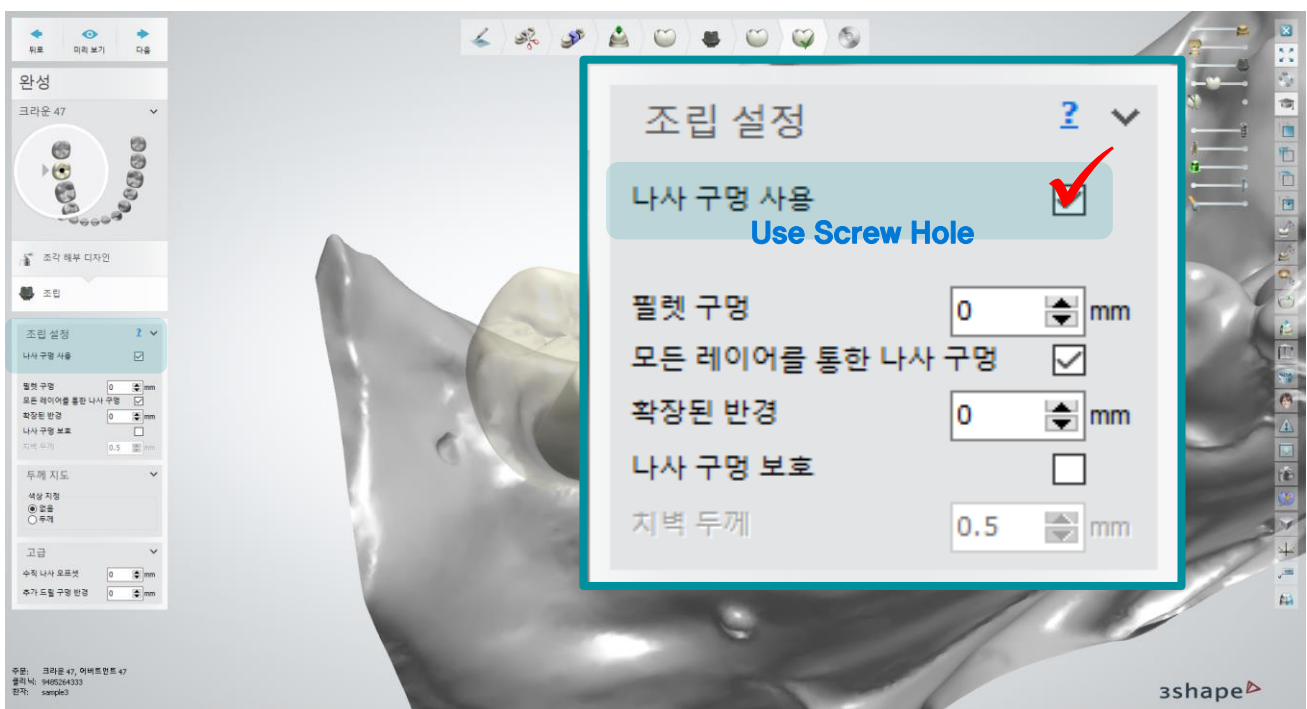


Design : Angled Abutment

- Design Prosthesis

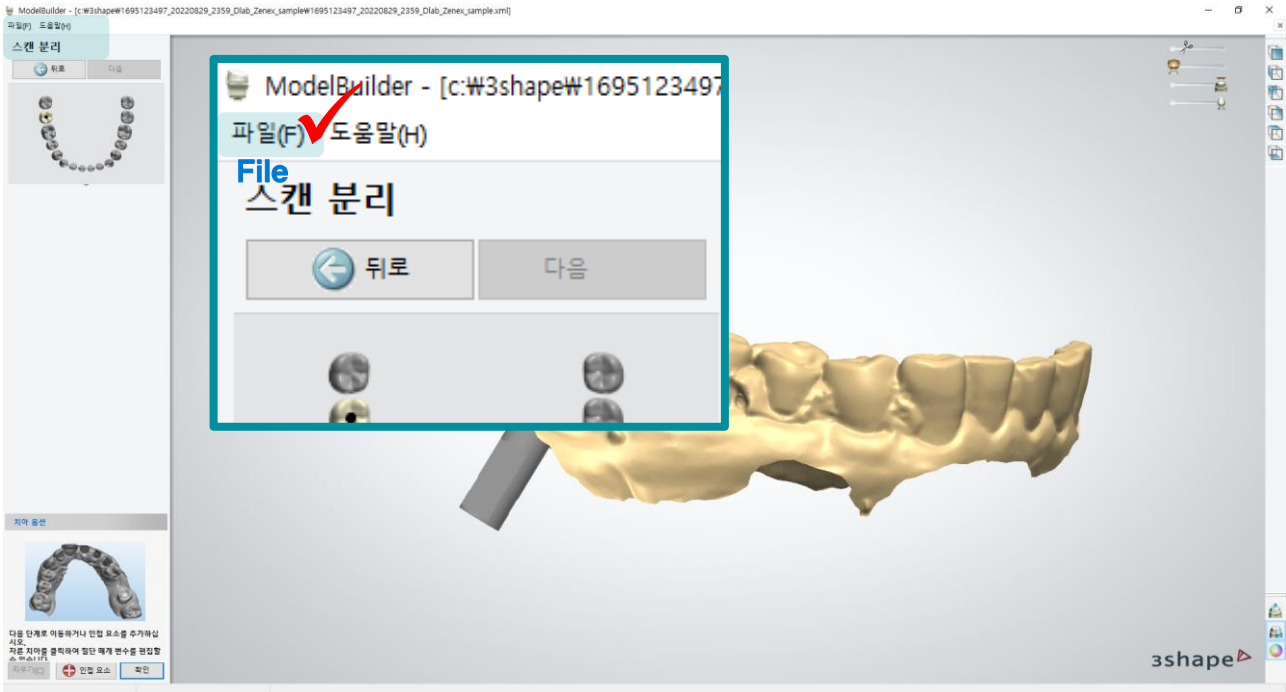


- Must check **“Use Screw Hole”** : May cause error during model building

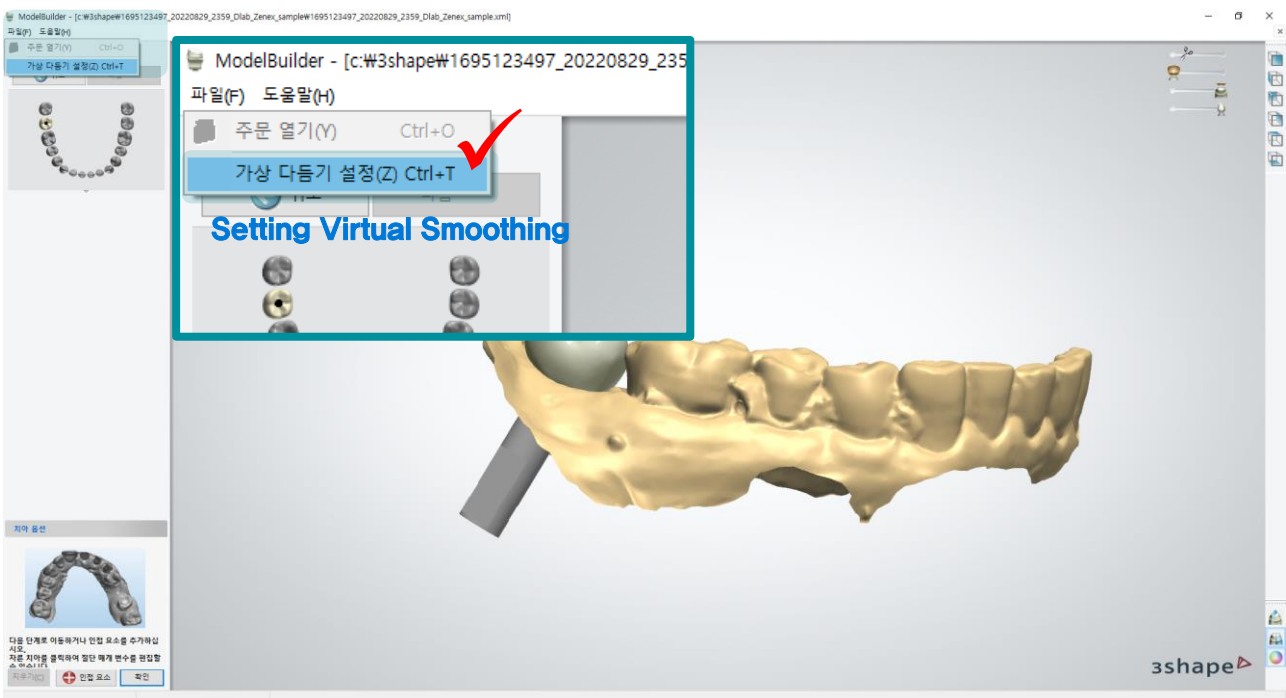


Design : Model Builder

- Click "File"



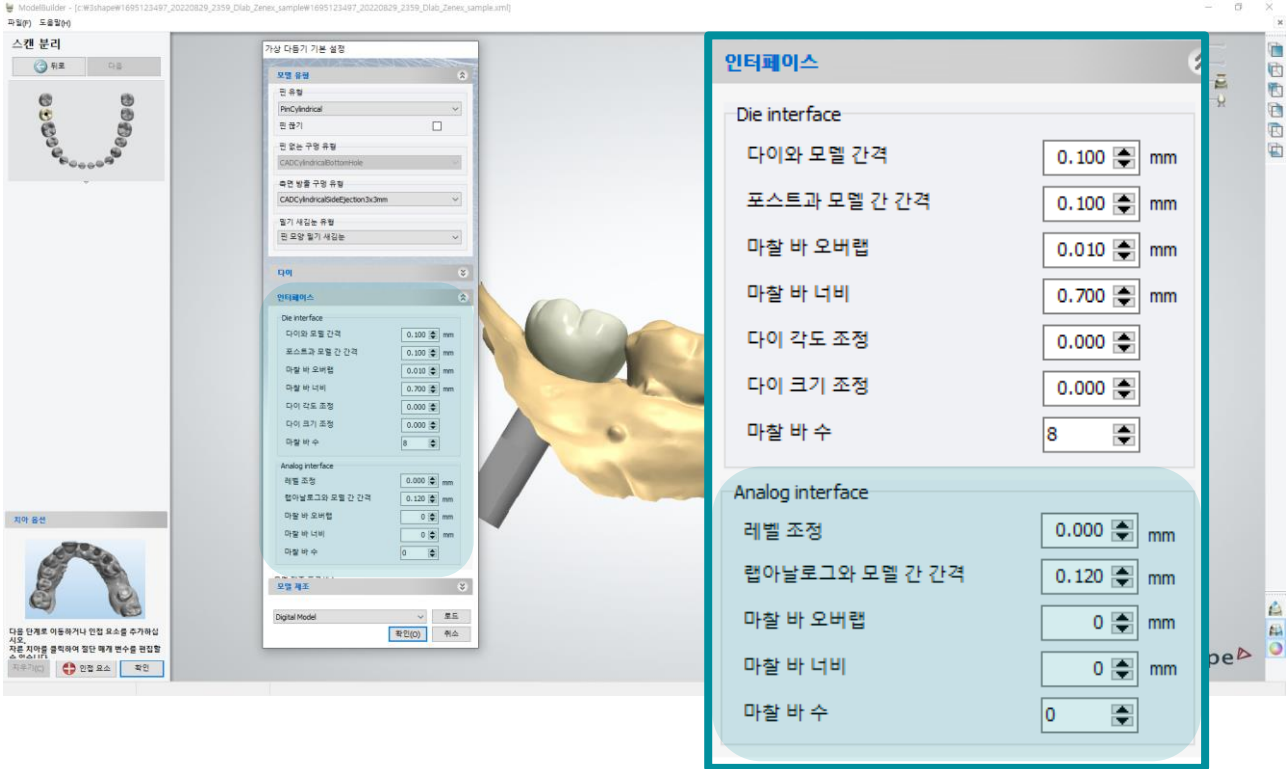
- Click "Setting virtual smoothing"



Design : Model Builder

- Interface ▶ Analog interface

※ Adjust the numerical value of interface according to each equipment



- Complete building mold

